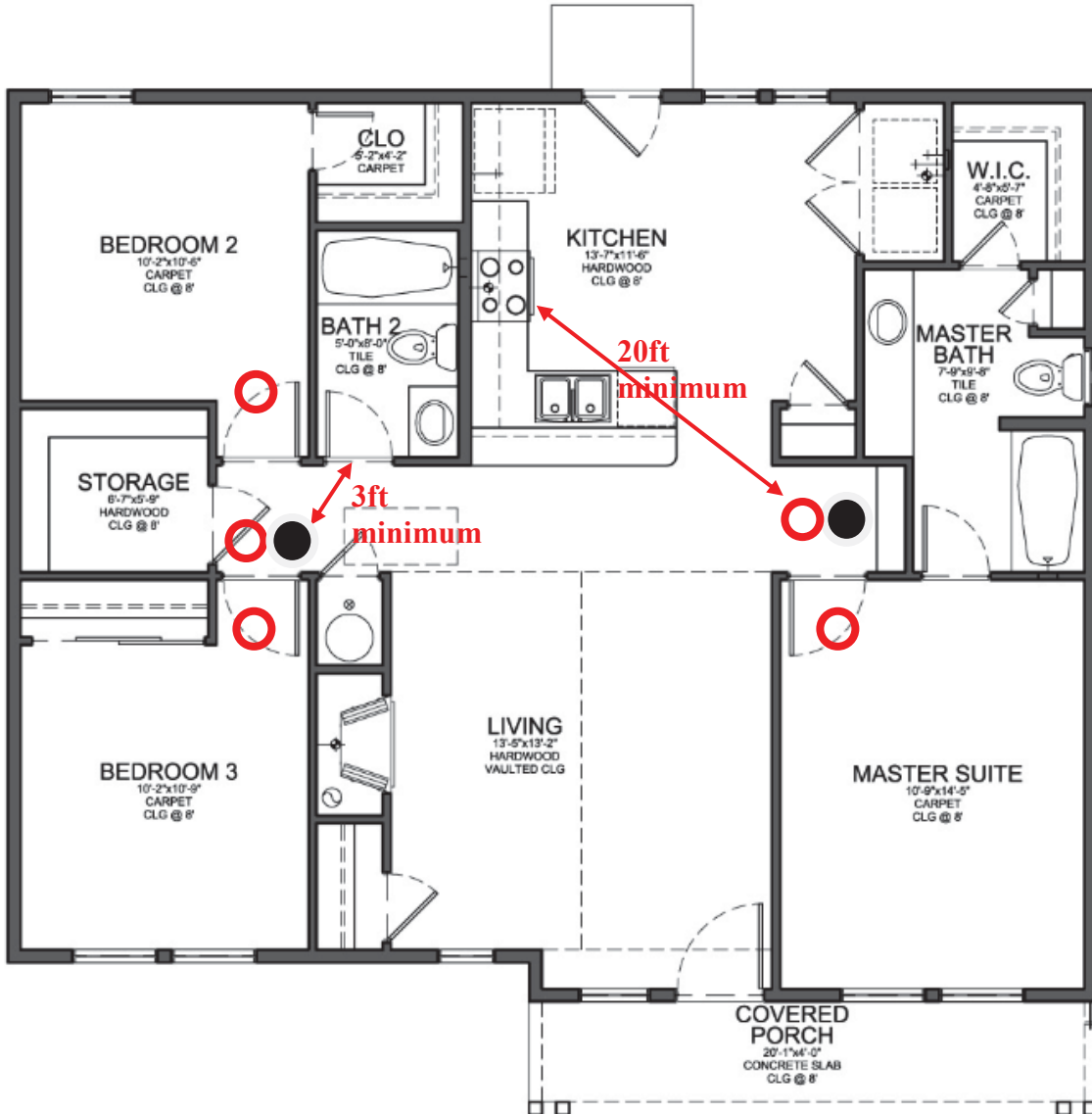


Required Locations of Smoke/Carbon Monoxide Detectors



○ = Smoke Detector

● = Carbon Monoxide Detector

(Combination Smoke/Carbon Monoxide detectors are recommended)

Placement Considerations:

- Remember that every level including basements also requires both carbon monoxide and smoke detectors.
- Smoke detectors shall have a minimum **10-year** rated battery (*effective July 1, 2014*).
- Detectors shall be located a minimum of **20ft away** from cooking appliances.
- Detectors shall be located **three (3) feet away** from openings into bathrooms, mechanical supply/return registers and ceiling fans.