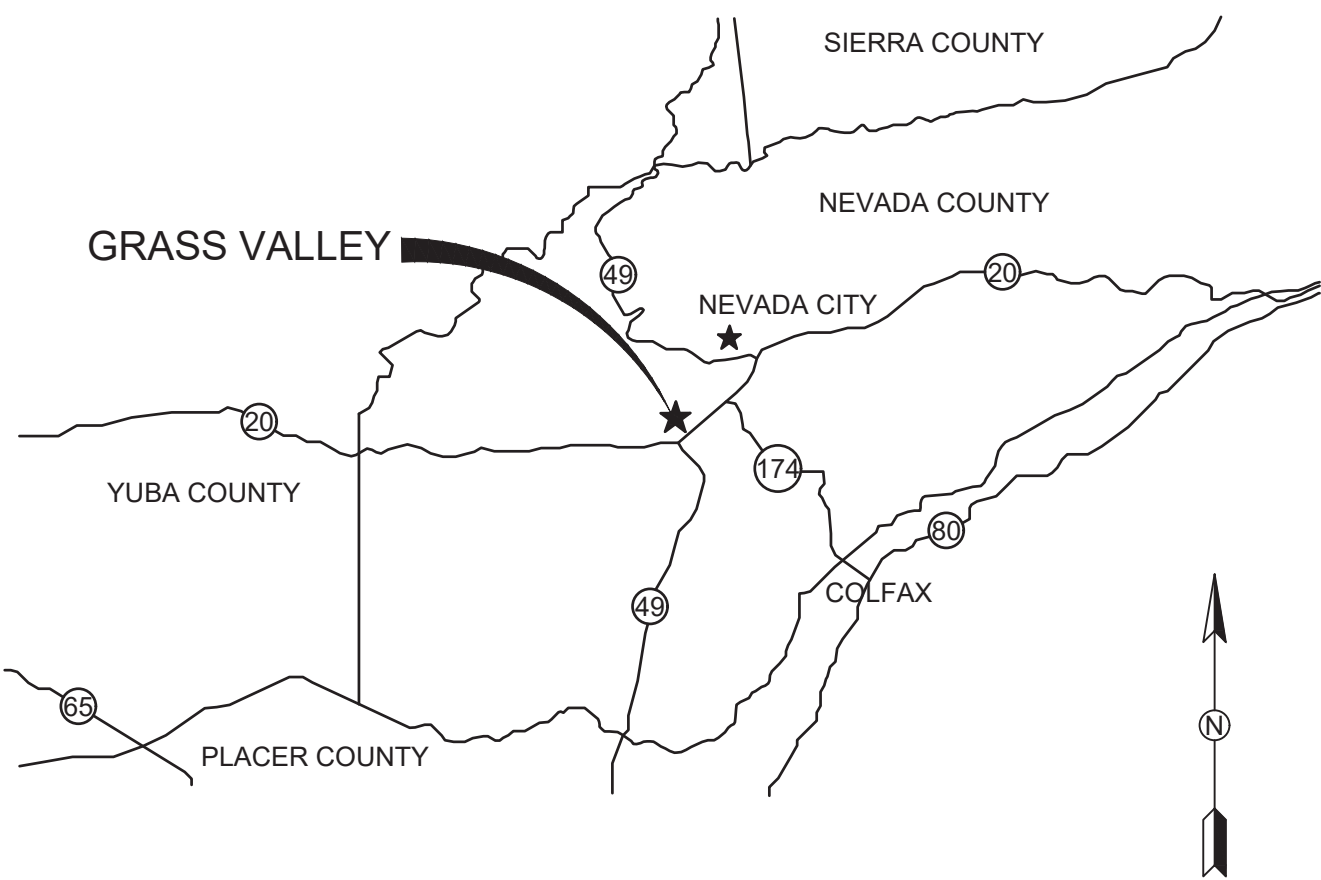
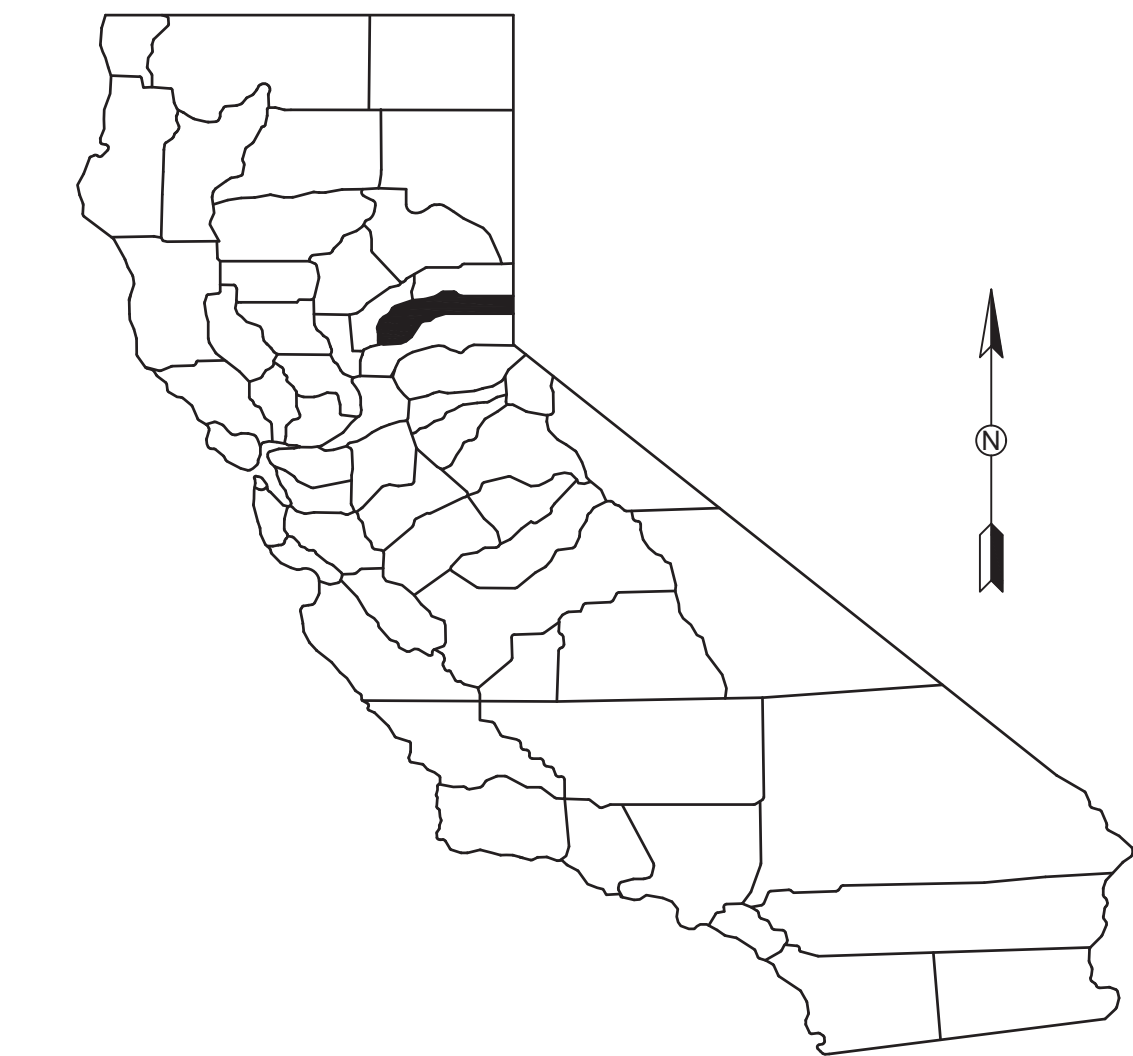


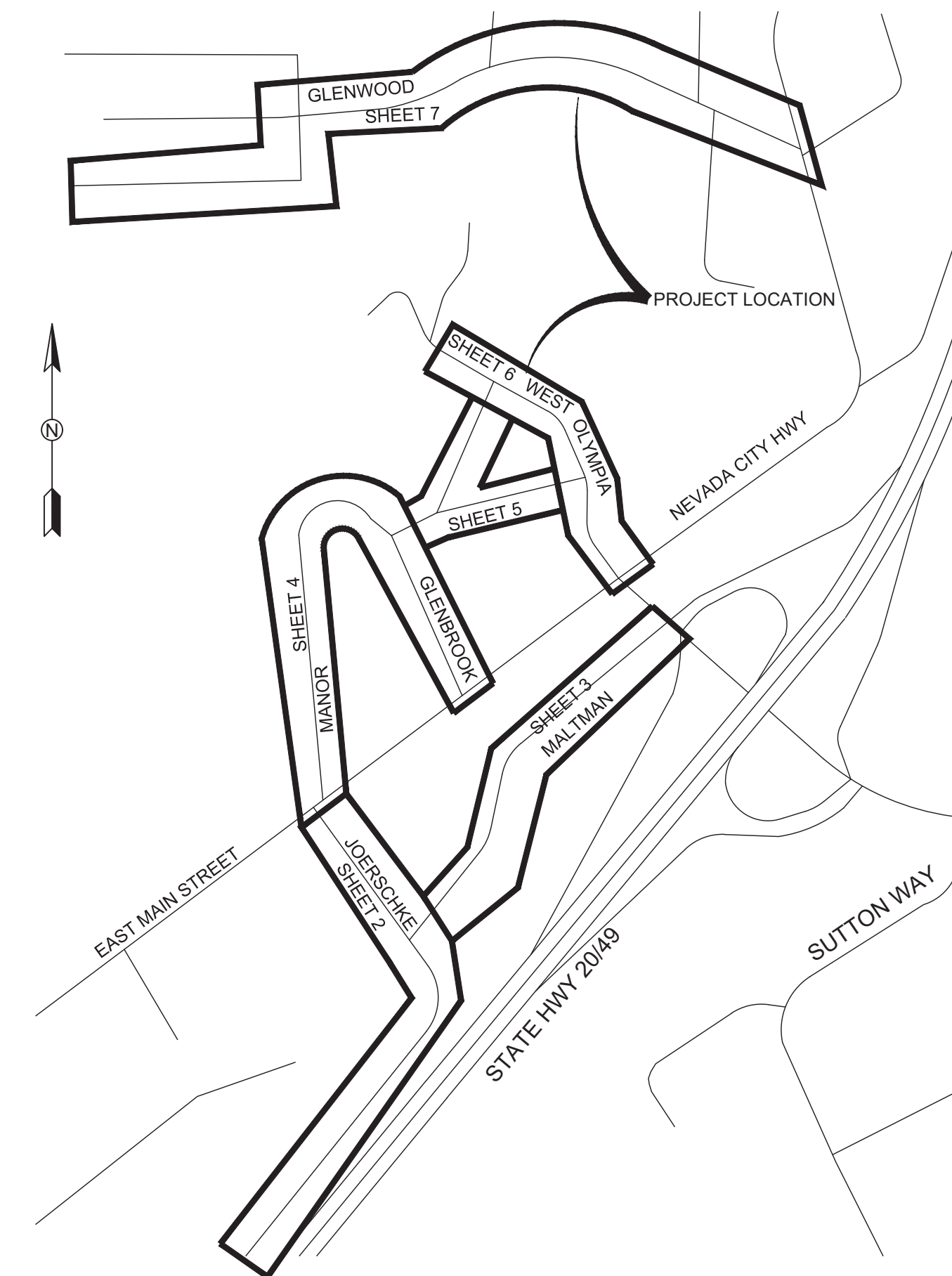
CITY OF GRASS VALLEY
ENGINEERING DIVISION
IMPROVEMENT PLANS FOR

2019/20 MEASURE E STREET
REHABILITATION PROJECT

PROJECT NO. 20-02

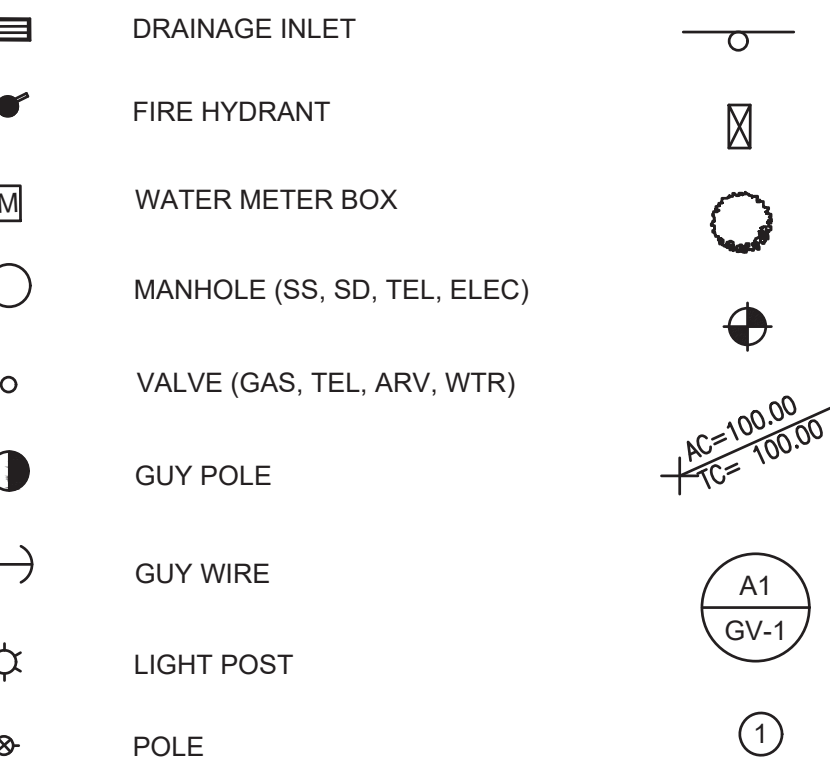
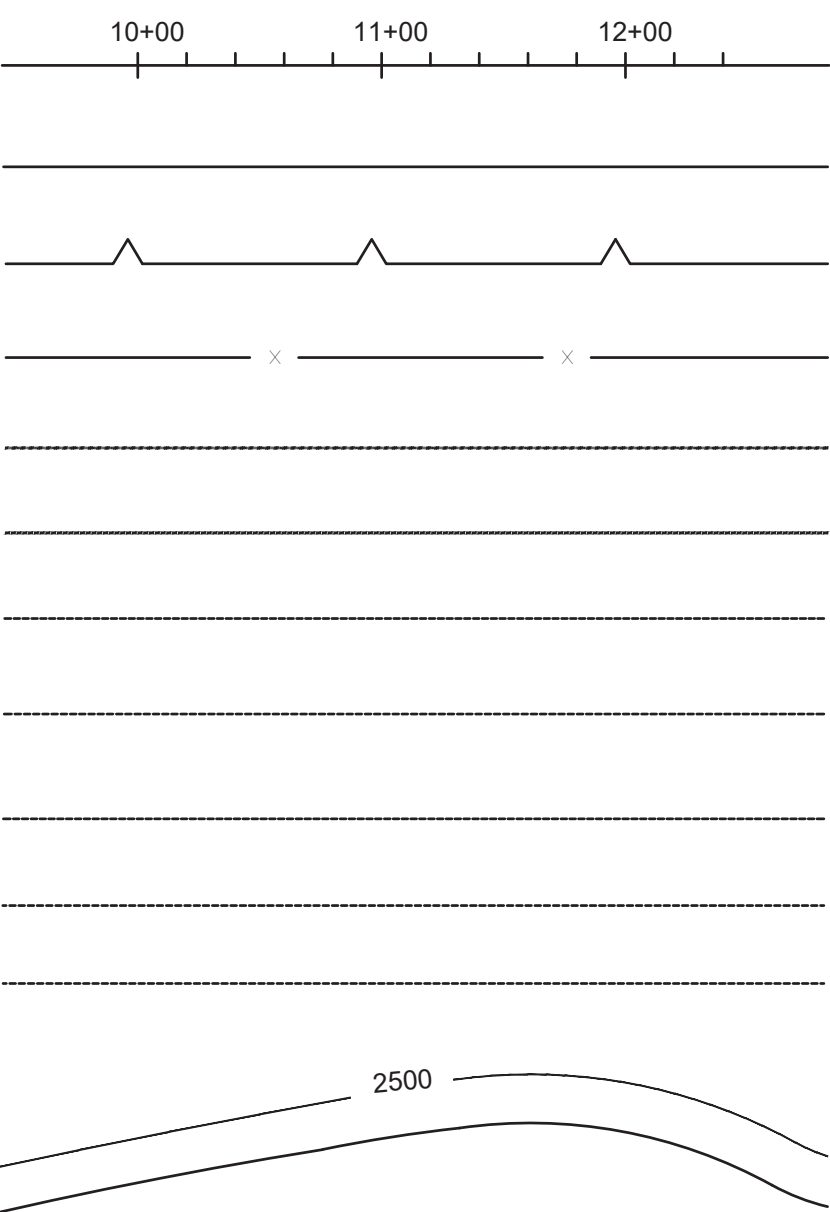


VICINITY MAP
NO SCALE



LOCATION AND INDEX MAP
NO SCALE

CONSTRUCTION LEGEND:



CALL BEFORE YOU DIG

THE CONTRACTOR SHALL CALL "UNDERGROUND SERVICE ALERT" (USA) AT 1-800-227-2600 AT LEAST TWO WORKING DAYS PRIOR TO PERFORMING EXCAVATION.

SHEET INDEX:

1. TITLE SHEET
2. CONSTRUCTION PLAN (JOERSCHKE DR)
3. CONSTRUCTION PLAN (MALTMAN DR)
4. CONSTRUCTION PLAN (MANOR & GLENBROOK DR)
5. CONSTRUCTION PLAN (ANNEX & APPLE AVE)
6. CONSTRUCTION PLAN (WEST OLYMPIA DR)
7. CONSTRUCTION PLAN (GLENWOOD RD)
8. DETAILS

ABBREVIATIONS:

AB	AGGREGATE BASE	PCC	PORTLAND CEMENT CONCRETE
AC	ASPHALT CONCRETE	P	PROPERTY LINE
C&G	CURB AND GUTTER	(P)	PROPOSED
CF	CUBIC FOOT	PSI	POUNDS PER SQUARE INCH
CL	CENTERLINE	PUE	PUBLIC UTILITY EASEMENT
CY	CUBIC YARD	PVC	POLYVINYL CHLORIDE
E	ELECTRIC	PVMT	PAVEMENT
(E)	EXISTING	R	RADIUS
ELEV	ELEVATION	RCP	REINFORCED CONCRETE PIPE
EP	EDGE OF PAVEMENT	RW	RETAINING WALL
FL	FLOW LINE	ROW	RIGHT OF WAY
FT	FEET	SD	STORM DRAIN
FTG	FOOTING	SF	SQUARE FOOT
G	GAS	SY	SQUARE YARD
ID	INSIDE DIAMETER	ST	STREET
IE	INVERT ELEVATION	STA	STATION
L	LEFT	STD	STANDARD
LF	LINEAR FOOT	SW	SIDEWALK
MAX	MAXIMUM	SS	SANITARY SEWER
MH	MANHOLE	TBC	TOP BACK OF CURB
MIN	MINIMUM	TBW	TOP BACK OF WALK
MISC	MISCELLANEOUS	TFC	TOP FACE OF CURB
NO	NUMBER	TC	TOP OF CURB
NTS	NOT TO SCALE	TP	TELEPHONE POLE
OD	OUTSIDE DIAMETER	TS	TRAFFIC SIGNAL
		TYP	TYPICAL

UTILITY/EMERGENCY CONTACTS:

SEWER/ STORM DRAIN:	CITY OF GRASS VALLEY 125 E MAIN ST GRASS VALLEY, CA 95945	530-274-4350
FIRE PROTECTION:	CITY OF GRASS VALLEY 125 E MAIN ST GRASS VALLEY, CA 95945	530-274-4370
WATER	NEVADA IRRIGATION DISTRICT 1036 W MAIN ST GRASS VALLEY, CA 95945	530-273-6185
ELECTRICITY/GAS:	PG&E 788 TAYLORVILLE RD GRASS VALLEY, CA 95945	530-477-3260
TELEVISION:	COMCAST 427 EATON RD CHICO, CA 95973	530-790-3369
PHONE:	AT&T 3545 EARHART AVE ROCKLIN, CA 95765	916-484-2388

NOTES:

1. THE CONTRACTOR SHALL POSSESS A VALID CALIFORNIA CLASS A CONTRACTORS LICENSE, OR A COMBINATION OF THE FOLLOWING CLASSES, (C8 - CONCRETE CONTRACTOR, C12 - EARTHWORK AND PAVING CONTRACTOR, C31 - CONSTRUCTION ZONE TRAFFIC CONTROL CONTRACTOR, C32 - PARKING AND HIGHWAY IMPROVEMENT CONTRACTOR, C45 - SIGN CONTRACTOR, AND D63 - CONSTRUCTION CLEANUP CONTRACTOR) AT THE TIME OF THE BID AWARD, AND THE LICENSE SHALL REMAIN IN EFFECT THROUGHOUT THE TERM OF THIS CONTRACT.
2. THE CONSTRUCTION METHODS AND MATERIALS SHALL CONFORM TO LATEST EDITIONS OF THE STATE OF CALIFORNIA, DEPARTMENT OF TRANSPORTATION STANDARD SPECIFICATIONS AND STANDARD PLANS, THE IMPROVEMENT STANDARDS AND STANDARD DRAWINGS OF THE CITY OF GRASS VALLEY AND THE CALIFORNIA MUTCD. IN CASE OF CONFLICT, REFER TO THE PROJECT SPECIAL PROVISIONS FOR ORDER OF PRECEDENCE.
3. THE CITY OF GRASS VALLEY HAS MADE EVERY EFFORT TO SHOW LOCATIONS OF ANY AND ALL EXISTING SURFACE AND SUBSURFACE STRUCTURES. HOWEVER, ACTUAL FIELD CONDITIONS AND LOCATIONS CAN VARY CONSIDERABLY FROM PLAN LOCATIONS. THEREFORE, THE CITY OF GRASS VALLEY CANNOT, AND DOES NOT, ASSUME RESPONSIBILITY OF THE EXISTENCE OR LOCATION OF ANY STRUCTURE SUCH AS, BUT NOT LIMITED TO, UTILITIES, PIPELINES AND SEWERS. THE CONTRACTOR IS RESPONSIBLE FOR CONTACTING ALL AGENCIES AND/OR OWNERS TO VERIFY THIS INFORMATION PRIOR TO AND DURING CONSTRUCTION OF IMPROVEMENTS SHOWN HEREON, AND TO CONTACT THE ENGINEER IN THE EVENT OF ANY SIGNIFICANT DISCREPANCY.
4. THE CONTRACTOR IS RESPONSIBLE FOR DETERMINING THE LOCATION OF, AND PROTECTING ALL EXISTING UTILITIES AND REPAIRING DAMAGE TO EXISTING UTILITIES. THE CONTRACTOR SHALL CONTACT UNDERGROUND SERVICE ALERT (1-800-227-2600) AT LEAST TWO WORKING DAYS PRIOR TO COMMENCEMENT OF EXCAVATION.

RECORD DRAWINGS NOTE:

ALL INFORMATION SHOWN ON THESE PLANS HAS BEEN PREPARED BY, OR UNDER THE DIRECTION OF, THE UNDERSIGNED ENGINEER. ADJUSTMENTS MADE IN THE FIELD DURING CONSTRUCTION ARE INCLUDED HEREIN AND ARE BASED UPON FIELD OBSERVATIONS MADE UNDER THE DIRECTION OF OR BY THE UNDERSIGNED AND/OR INFORMATION RECEIVED FROM THE CITY CONSTRUCTION INSPECTOR, PROJECT CONTRACTORS AND OTHER SOURCES WHEN THE ENGINEER IS ADVISED IN WRITING OF SUCH ADJUSTMENTS. THE ENGINEER PREPARING THESE PLANS WILL NOT BE RESPONSIBLE FOR, OR LIABLE FOR, CHANGES TO THESE PLANS NOT AUTHORIZED BY THE ENGINEER. ADJUSTMENTS MADE IN THE FIELD WERE NOT SURVEYED AND THE ACCURACY OF THESE DRAWINGS WITH RESPECT TO THOSE ADJUSTMENTS IS NOT GUARANTEED BY THE ENGINEER OR THE CITY OF GRASS VALLEY; FIELD VERIFICATION OF ALL IMPROVEMENTS IS RECOMMENDED.

DATE ENGINEER SIGNATURE
(STAMP OR SEAL)

APPROVED BY THE CITY COUNCIL OF THE CITY OF GRASS VALLEY THE 28TH DAY OF APRIL 2020.		
ACTING CITY CLERK	75378	5/28/20
ASSISTANT CITY ENGINEER	R.C.E.	DATE

NOTE:
THE CITY OF GRASS VALLEY OR ITS OFFICERS OR AGENTS SHALL NOT BE RESPONSIBLE FOR THE ACCURACY OR COMPLETENESS OF ELECTRONIC COPIES OF THIS PLAN SHEET.

CITY OF GRASS VALLEY ENGINEERING DIVISION
2019/20 MEASURE E STREET
REHABILITATION PROJECT
TITLE SHEET

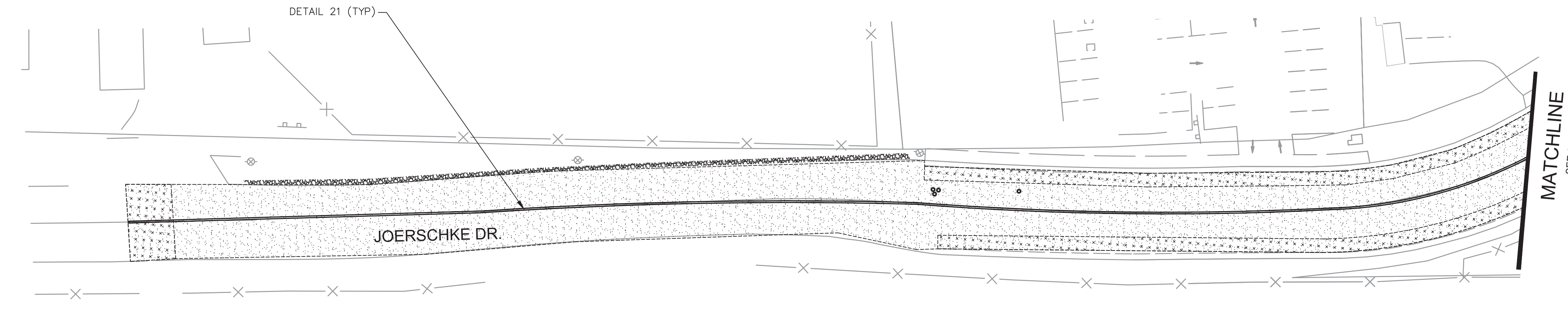
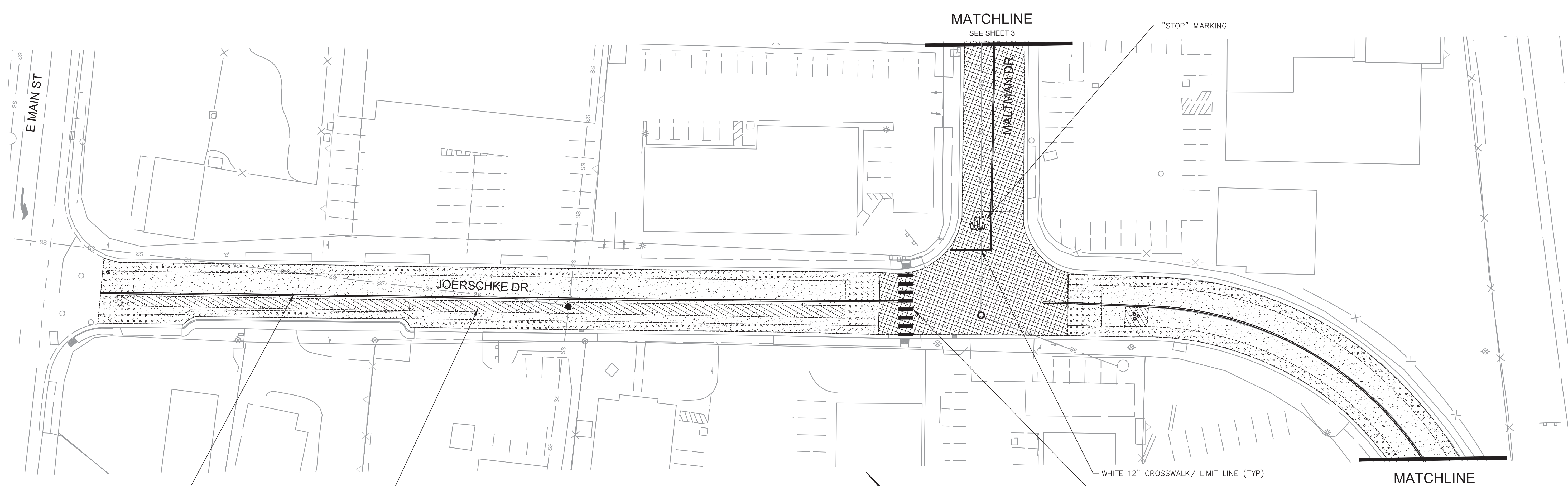


DRAWN BY: BPJ	DATE: MAY 2020
CHECKED BY: BPJ	DATE: MAY 2020
DRAWING NUMBER: 2164	
SHEET NUMBER: 1 OF 8	

REVISIONS		APPROVAL	
No.	Description	Engr Init	Date



PROJECT NUMBER:
20-02



CONSTRUCTION PLAN
JOERSCHKE DR
SCALE: 1"=30'

CONSTRUCTION PLAN
JOERSCHKE DR
SCALE: 1"=30'

LEGEND

- 2" REMOVE AND REPLACE HMA PER DETAILS A, C, SHEET 8
- 3" REMOVE AND REPLACE HMA PER DETAILS A, C, SHEET 8
- 3" MILL AC AND COMPACT IN PLACE W/ 2.5" OVERLAY PER DETAIL F SHEET 7
- 2" TAPER GRIND PER DETAIL B, SHEET 8
- 2" HMA OVERLAY AREA
- REMOVE EXISTING VEGETATION AND RUBBLE, INSTALL AC GRINDING SHOULDER BACKING PER DETAIL
- UTILITY COVER TO BE ADJUSTED BY OTHERS (OR BY SEPARATE CONTRACT W/ NID)
- MANHOLE COVER TO BE ADJUSTED PER DETAIL F, SHEET 8
- MANHOLE FRAME & COVER TO BE REPLACED AND ADJUSTED PER DETAIL F, SHEET 8

NOTES

- THE CONTRACTOR SHALL ACCURATELY LOCATE AND RECORD THE LOCATIONS OF ALL UTILITY BOXES, CLEANOUTS AND MANHOLES.
- EXISTING PAVEMENT CRACKS GREATER THAN $\frac{3}{8}$ INCH WIDTH SHALL BE FILLED WITH HOT MIX RUBBERIZED CRACK FILLER PRIOR TO HMA OVERLAY. ANY OTHER VOIDS OR DEPRESSIONS GREATER THAN 1 INCH WIDTH SHALL BE FILLED WITH HMA PRIOR TO HMA OVERLAY.
- THE LIMITS OF HMA REMOVAL AND REPLACEMENT AND HMA OVERLAY SHOWN ARE APPROXIMATE. EXACT LOCATIONS TO BE MARKED IN THE FIELD AND APPROVED BY THE ENGINEER PRIOR TO GRINDING.
- NEW HMA PAVING SHALL CONFORM TO EXISTING DRIVEWAYS AND LIP OF GUTTER. PAVEMENT SHALL BE SLOPED TO ALLOW DRAINAGE TO FREELY FLOW FROM NEW PAVEMENT SURFACES TO EXISTING GUTTERS/ ROADWAY SHOULDERS
- THE CONTRACTOR SHALL COMPLETELY REMOVE EXISTING THERMOPLASTIC STRIPING AND MARKINGS PRIOR TO OVERLAY.
- UTILITY COVERS AND MANHOLES WITHIN THE HMA PAVING AREA SHALL BE ADJUSTED TO GRADE AS SHOWN OR OTHERWISE SHALL BE CONFORMED TO AS APPROVED BY THE ENGINEER AND THE OWNER.
- STRIPING AND MARKING PER CA MUTCD AND CALTRANS STANDARD PLANS.
- THE CONTRACTOR SHALL MARK OUT THE STRIPING LAYOUT AND OBTAIN THE ENGINEER'S ACCEPTANCE PRIOR TO STRIPING. CHANGES MAY OCCUR IN THE FIELD.

NOTE:
THE CITY OF GRASS VALLEY OR ITS OFFICERS OR AGENTS SHALL NOT BE RESPONSIBLE FOR THE ACCURACY OR COMPLETENESS OF ELECTRONIC COPIES OF THIS PLAN SHEET.

CITY OF GRASS VALLEY ENGINEERING DIVISION

2019/20 MEASURE E STREET
REHABILITATION PROJECT
CONSTRUCTION PLAN (JOERSCHKE DR)

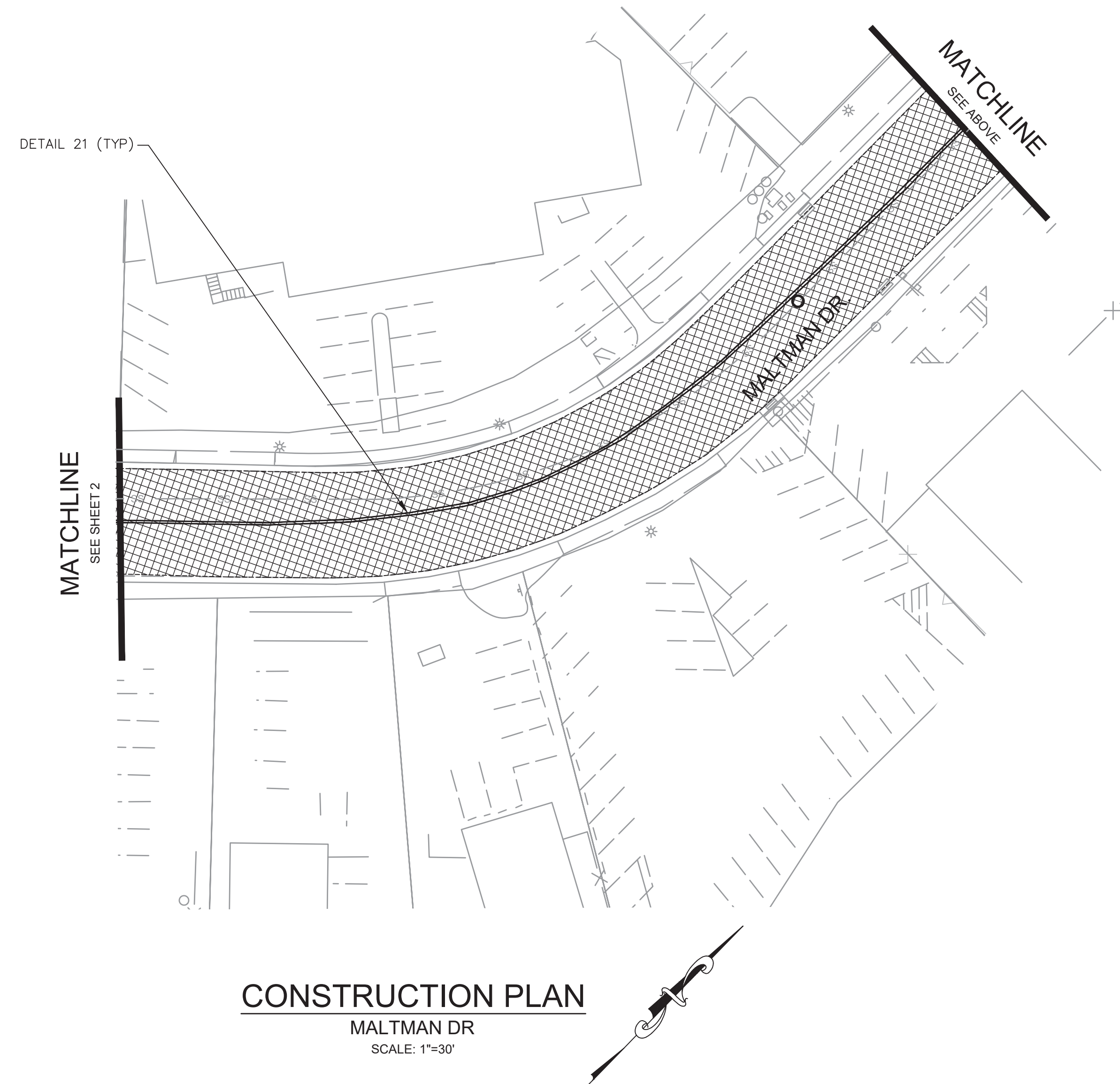
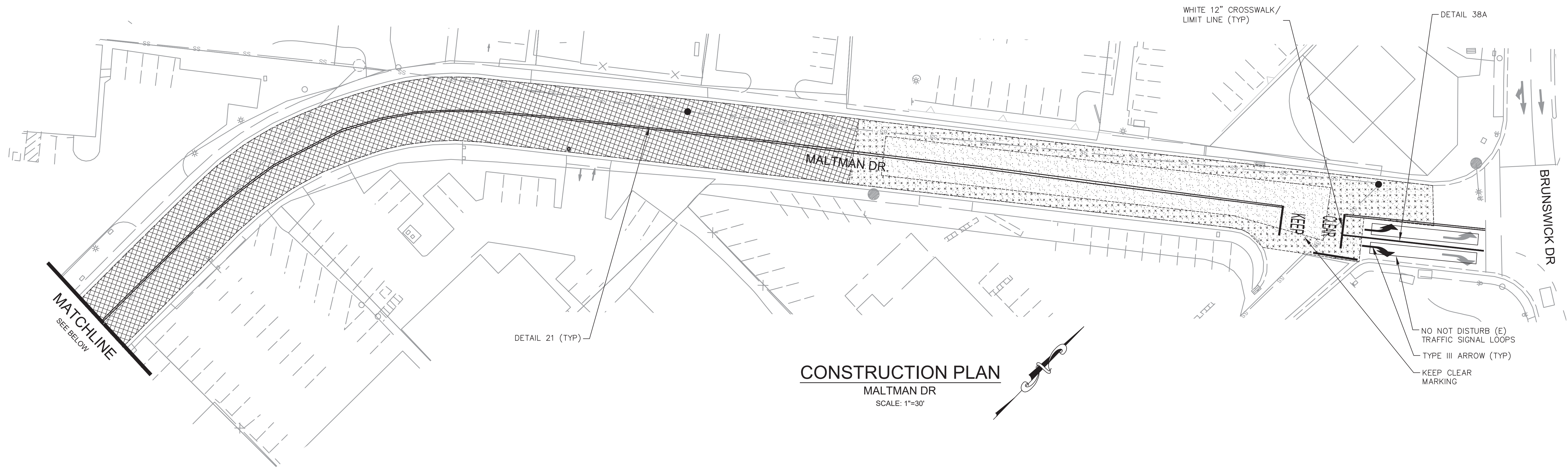


DRAWN BY: BPJ	DATE: MAY 2020
CHECKED BY: BPJ	DATE: MAY 2020
DRAWING NUMBER: 2164	
SHEET NUMBER: 2 OF 8	




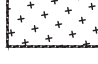

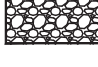


REVISIONS		APPROVAL	
No.	Description	Engr Init	Date

PROJECT NUMBER:
20-02





LEGEND

-  2" REMOVE AND REPLACE HMA PER DETAILS A, C, SHEET 8
-  3" REMOVE AND REPLACE HMA PER DETAILS A, C, SHEET 8
-  3" MILL AC AND COMPACT IN PLACE W/ 2.5" OVERLAY PER DETAIL F SHEET 7
-  2" TAPER GRIND PER DETAIL B, SHEET 8
-  2" HMA OVERLAY AREA
-  REMOVE EXISTING VEGETATION AND RUBBLE, INSTALL AC GRINDING SHOULDER BACKING PER DETAIL
 - UTILITY COVER TO BE ADJUSTED BY OTHERS (OR BY SEPARATE CONTRACT W/ NID)
-  MANHOLE COVER TO BE ADJUSTED PER DETAIL F, SHEET 8
-  MANHOLE FRAME & COVER TO BE REPLACED AND ADJUSTED PER DETAIL F, SHEET 8

NOTES

- THE CONTRACTOR SHALL ACCURATELY LOCATE AND RECORD THE LOCATIONS OF ALL UTILITY BOXES, CLEANOUTS AND MANHOLES.
- EXISTING PAVEMENT CRACKS GREATER THAN $\frac{3}{8}$ INCH WIDTH SHALL BE FILLED WITH HOT MIX RUBBERIZED CRACK FILLER PRIOR TO HMA OVERLAY. ANY OTHER VOIDS OR DEPRESSIONS GREATER THAN 1 INCH WIDTH SHALL BE FILLED WITH HMA PRIOR TO HMA OVERLAY.
- THE LIMITS OF HMA REMOVAL AND REPLACEMENT AND HMA OVERLAY SHOWN ARE APPROXIMATE. EXACT LOCATIONS TO BE MARKED IN THE FIELD AND APPROVED BY THE ENGINEER PRIOR TO GRINDING.
- NEW HMA PAVING SHALL CONFORM TO EXISTING DRIVEWAYS AND LIP OF GUTTER. PAVEMENT SHALL BE SLOPED TO ALLOW DRAINAGE TO FREELY FLOW FROM NEW PAVEMENT SURFACES TO EXISTING GUTTERS/ ROADWAY SHOULDERS
- THE CONTRACTOR SHALL COMPLETELY REMOVE EXISTING THERMOPLASTIC STRIPING AND MARKINGS PRIOR TO OVERLAY.
- UTILITY COVERS AND MANHOLES WITHIN THE HMA PAVING AREA SHALL BE ADJUSTED TO GRADE AS SHOWN OR OTHERWISE SHALL BE CONFORMED TO AS APPROVED BY THE ENGINEER AND THE OWNER.
- STRIPING AND MARKING PER CA MUTCD AND CALTRANS STANDARD PLANS.
- THE CONTRACTOR SHALL MARK OUT THE STRIPING LAYOUT AND OBTAIN THE ENGINEER'S ACCEPTANCE PRIOR TO STRIPING. CHANGES MAY OCCUR IN THE FIELD.

NOTE:
THE CITY OF GRASS VALLEY OR ITS OFFICERS OR AGENTS SHALL NOT BE RESPONSIBLE FOR THE ACCURACY OR COMPLETENESS OF ELECTRONIC COPIES OF THIS PLAN SHEET.

REVISIONS

No.	Description	Engr Init	By	Date



PROJECT NUMBER:

20-02

CITY OF GRASS VALLEY ENGINEERING DIVISION

2019/20 MEASURE E STREET REHABILITATION PROJECT CONSTRUCTION PLAN (MALTMAN)



DRAWN BY: **BPJ** DATE: **MAY 2020**

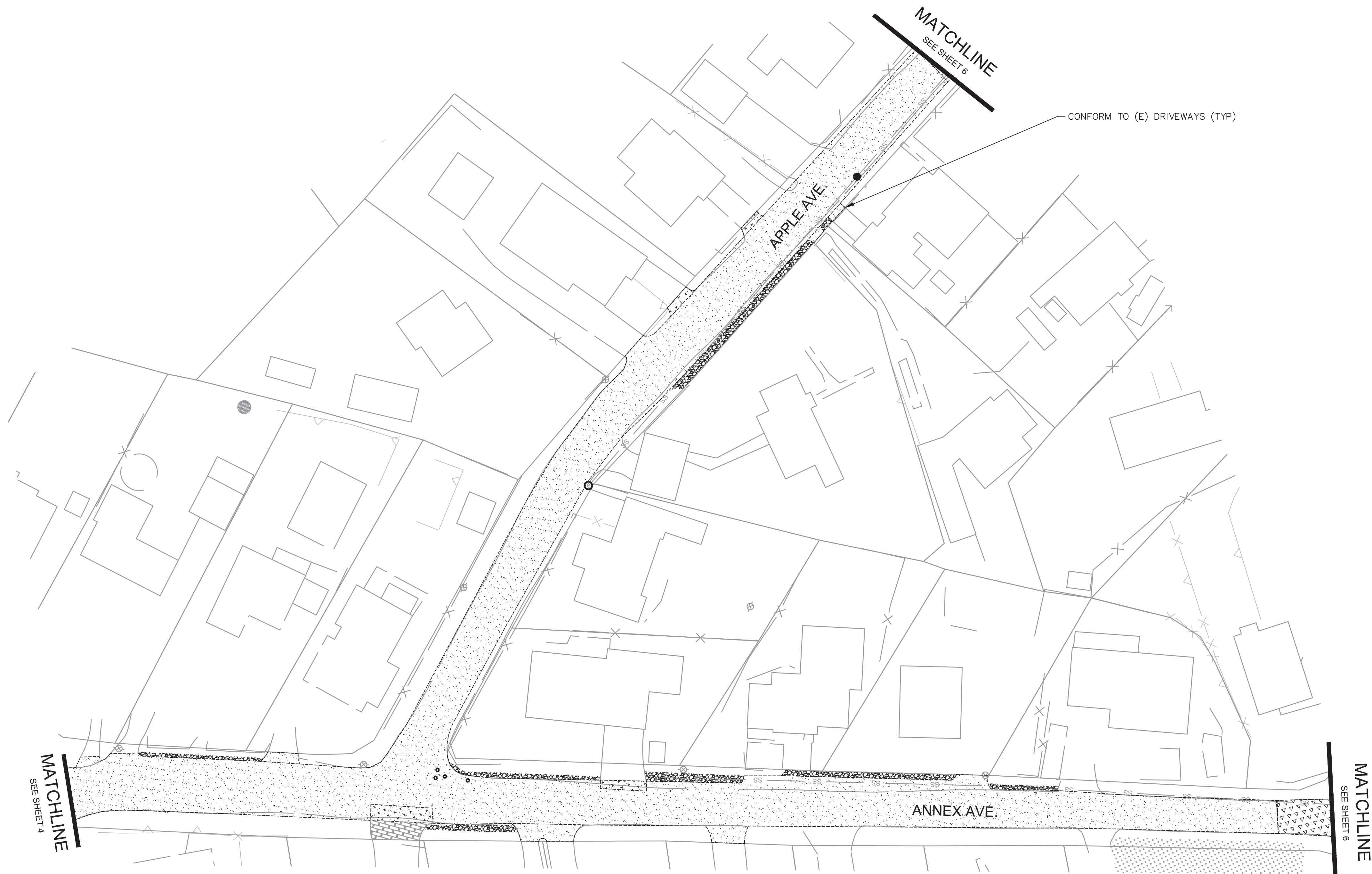
CHECKED BY: **BPJ** DATE: **MAY 2020**

DRAWING NUMBER:

2164

SHEET NUMBER:

3 OF 8



CONSTRUCTION PLAN
ANNEX AVE - APPLE AVE
SCALE: 1"=30'

LEGEND

- 2" REMOVE AND REPLACE HMA PER DETAILS A, C, SHEET 8
- 3" REMOVE AND REPLACE HMA PER DETAILS A, C, SHEET 8
- 3" MILL AC AND COMPACT IN PLACE W/ 2.5" OVERLAY PER DETAIL F SHEET 7
- 2" TAPER GRIND PER DETAIL B, SHEET 8
- 2" HMA OVERLAY AREA
- REMOVE EXISTING VEGETATION AND RUBBLE, INSTALL AC GRINDING SHOULDER BACKING PER DETAIL
- UTILITY COVER TO BE ADJUSTED BY OTHERS (OR BY SEPARATE CONTRACT W/ NID)
- MANHOLE COVER TO BE ADJUSTED PER DETAIL F, SHEET 8
- MANHOLE FRAME & COVER TO BE REPLACED AND ADJUSTED PER DETAIL F, SHEET 8

NOTES

- THE CONTRACTOR SHALL ACCURATELY LOCATE AND RECORD THE LOCATIONS OF ALL UTILITY BOXES, CLEANOUTS AND MANHOLES.
- EXISTING PAVEMENT CRACKS GREATER THAN $\frac{3}{8}$ INCH WIDTH SHALL BE FILLED WITH HOT MIX RUBBERIZED CRACK FILLER PRIOR TO HMA OVERLAY. ANY OTHER VOIDS OR DEPRESSIONS GREATER THAN 1 INCH WIDTH SHALL BE FILLED WITH HMA PRIOR TO HMA OVERLAY.
- THE LIMITS OF HMA REMOVAL AND REPLACEMENT AND HMA OVERLAY SHOWN ARE APPROXIMATE. EXACT LOCATIONS TO BE MARKED IN THE FIELD AND APPROVED BY THE ENGINEER PRIOR TO GRINDING.
- NEW HMA PAVING SHALL CONFORM TO EXISTING DRIVEWAYS AND LIP OF GUTTER. PAVEMENT SHALL BE SLOPED TO ALLOW DRAINAGE TO FREELY FLOW FROM NEW PAVEMENT SURFACES TO EXISTING GUTTERS/ ROADWAY SHOULDERS
- THE CONTRACTOR SHALL COMPLETELY REMOVE EXISTING THERMOPLASTIC STRIPING AND MARKINGS PRIOR TO OVERLAY.
- UTILITY COVERS AND MANHOLES WITHIN THE HMA PAVING AREA SHALL BE ADJUSTED TO GRADE AS SHOWN OR OTHERWISE SHALL BE CONFORMED TO AS APPROVED BY THE ENGINEER AND THE OWNER.
- STRIPING AND MARKING PER CA MUTCD AND CALTRANS STANDARD PLANS.
- THE CONTRACTOR SHALL MARK OUT THE STRIPING LAYOUT AND OBTAIN THE ENGINEER'S ACCEPTANCE PRIOR TO STRIPING. CHANGES MAY OCCUR IN THE FIELD.

NOTE:
THE CITY OF GRASS VALLEY OR ITS OFFICERS OR AGENTS SHALL NOT BE RESPONSIBLE FOR THE ACCURACY OR COMPLETENESS OF ELECTRONIC COPIES OF THIS PLAN SHEET.

REVISIONS

No.	Description	Engr Init	By	Date



PROJECT NUMBER:
20-02

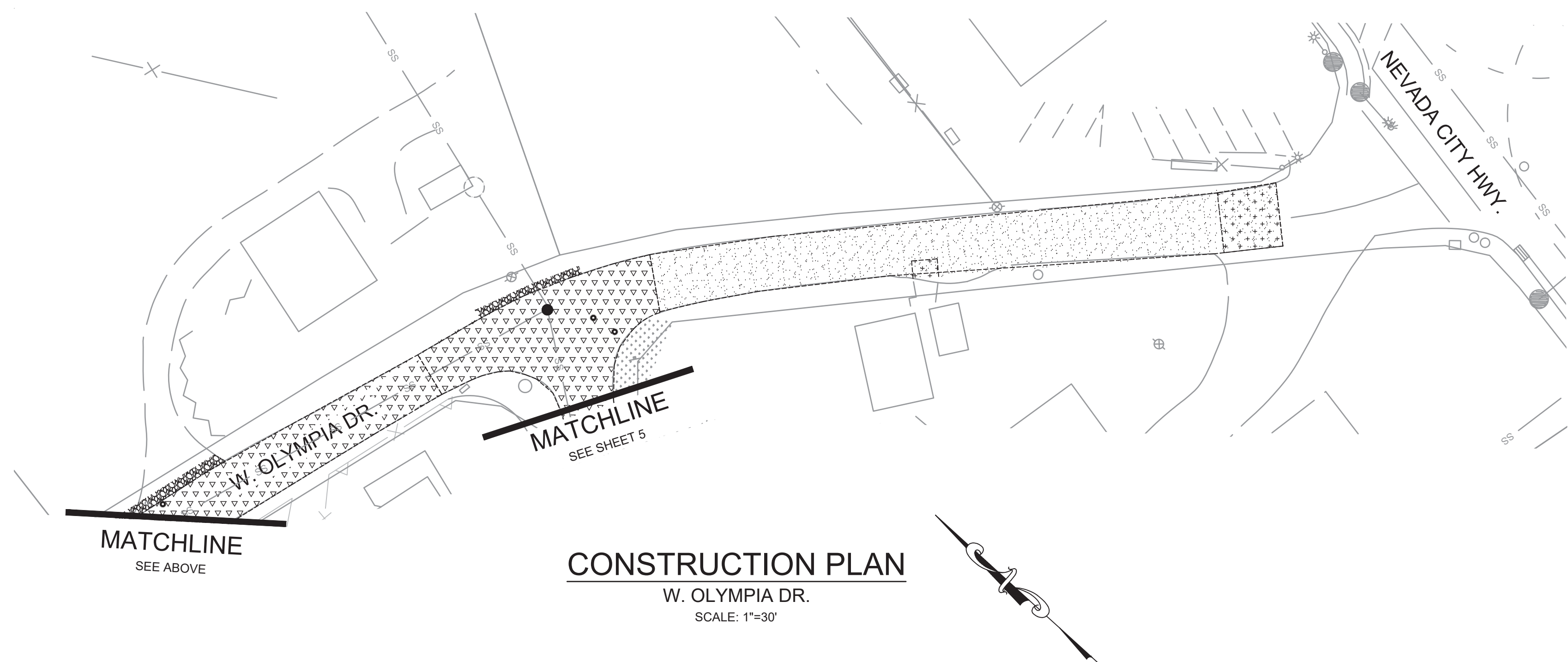
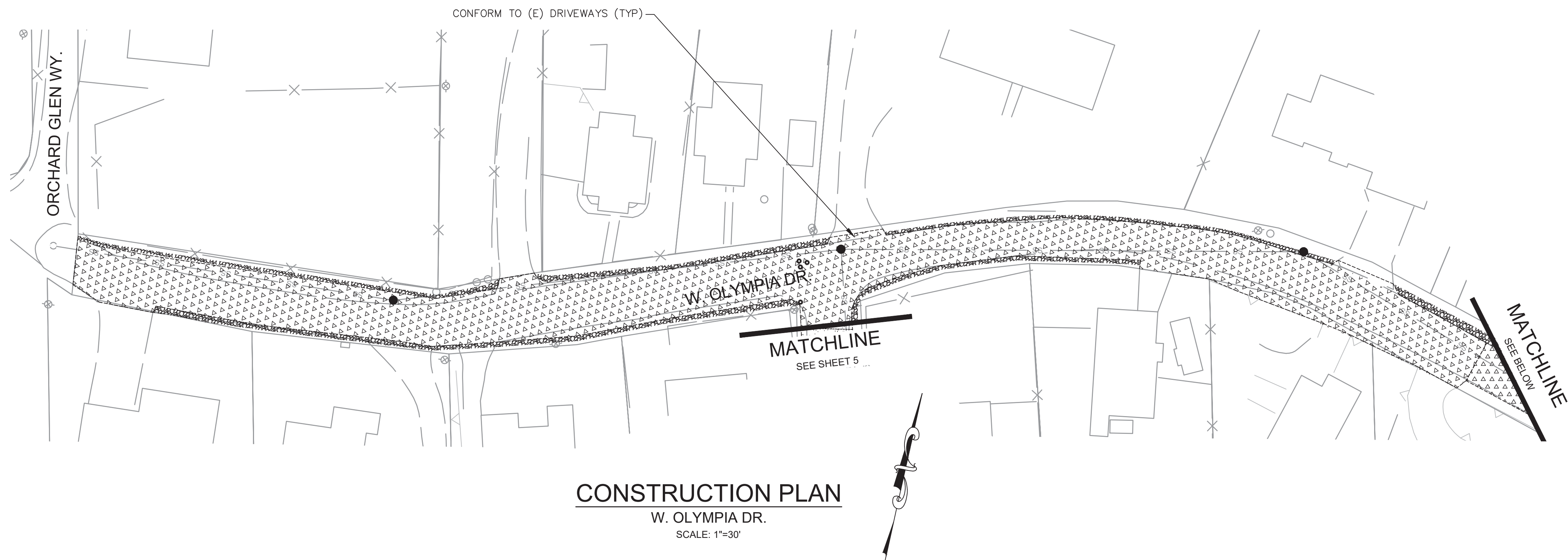
CITY OF GRASS VALLEY ENGINEERING DIVISION
**2019/20 MEASURE E STREET
REHABILITATION PROJECT**
CONSTRUCTION PLAN (ANNEX & APPLE)



DRAWN BY: **BPJ** DATE: **MAY 2020**
CHECKED BY: **BPJ** DATE: **MAY 2020**

DRAWING NUMBER:
2164

SHEET NUMBER:
5 OF 8



LEGEND

- 2" REMOVE AND REPLACE HMA PER DETAILS A, C, SHEET 8
- 3" REMOVE AND REPLACE HMA PER DETAILS A, C, SHEET 8
- 3" MILL AC AND COMPACT IN PLACE W/ 2.5" OVERLAY PER DETAIL F SHEET 7
- 2" TAPER GRIND PER DETAIL B, SHEET 8
- 2" HMA OVERLAY AREA
- REMOVE EXISTING VEGETATION AND RUBBLE, INSTALL AC GRINDING SHOULDER BACKING PER DETAIL
 - UTILITY COVER TO BE ADJUSTED BY OTHERS (OR BY SEPARATE CONTRACT W/ NID)
- MANHOLE COVER TO BE ADJUSTED PER DETAIL F, SHEET 8
- MANHOLE FRAME & COVER TO BE REPLACED AND ADJUSTED PER DETAIL F, SHEET 8

NOTES

- THE CONTRACTOR SHALL ACCURATELY LOCATE AND RECORD THE LOCATIONS OF ALL UTILITY BOXES, CLEANOUTS AND MANHOLES.
- EXISTING PAVEMENT CRACKS GREATER THAN $\frac{3}{8}$ INCH WIDTH SHALL BE FILLED WITH HOT MIX RUBBERIZED CRACK FILLER PRIOR TO HMA OVERLAY. ANY OTHER VOIDS OR DEPRESSIONS GREATER THAN 1 INCH WIDTH SHALL BE FILLED WITH HMA PRIOR TO HMA OVERLAY.
- THE LIMITS OF HMA REMOVAL AND REPLACEMENT AND HMA OVERLAY SHOWN ARE APPROXIMATE. EXACT LOCATIONS TO BE MARKED IN THE FIELD AND APPROVED BY THE ENGINEER PRIOR TO GRINDING.
- NEW HMA PAVING SHALL CONFORM TO EXISTING DRIVEWAYS AND LIP OF GUTTER. PAVEMENT SHALL BE SLOPED TO ALLOW DRAINAGE TO FREELY FLOW FROM NEW PAVEMENT SURFACES TO EXISTING GUTTERS/ ROADWAY SHOULDERS
- THE CONTRACTOR SHALL COMPLETELY REMOVE EXISTING THERMOPLASTIC STRIPING AND MARKINGS PRIOR TO OVERLAY.
- UTILITY COVERS AND MANHOLES WITHIN THE HMA PAVING AREA SHALL BE ADJUSTED TO GRADE AS SHOWN OR OTHERWISE SHALL BE CONFORMED TO AS APPROVED BY THE ENGINEER AND THE OWNER.
- STRIPING AND MARKING PER CA MUTCD AND CALTRANS STANDARD PLANS.
- THE CONTRACTOR SHALL MARK OUT THE STRIPING LAYOUT AND OBTAIN THE ENGINEER'S ACCEPTANCE PRIOR TO STRIPING. CHANGES MAY OCCUR IN THE FIELD.

NOTE:
THE CITY OF GRASS VALLEY OR ITS OFFICERS OR AGENTS SHALL NOT BE RESPONSIBLE FOR THE ACCURACY OR COMPLETENESS OF ELECTRONIC COPIES OF THIS PLAN SHEET.

REVISIONS

No.	Description	Engr Init	By	Date



PROJECT NUMBER:
20-02

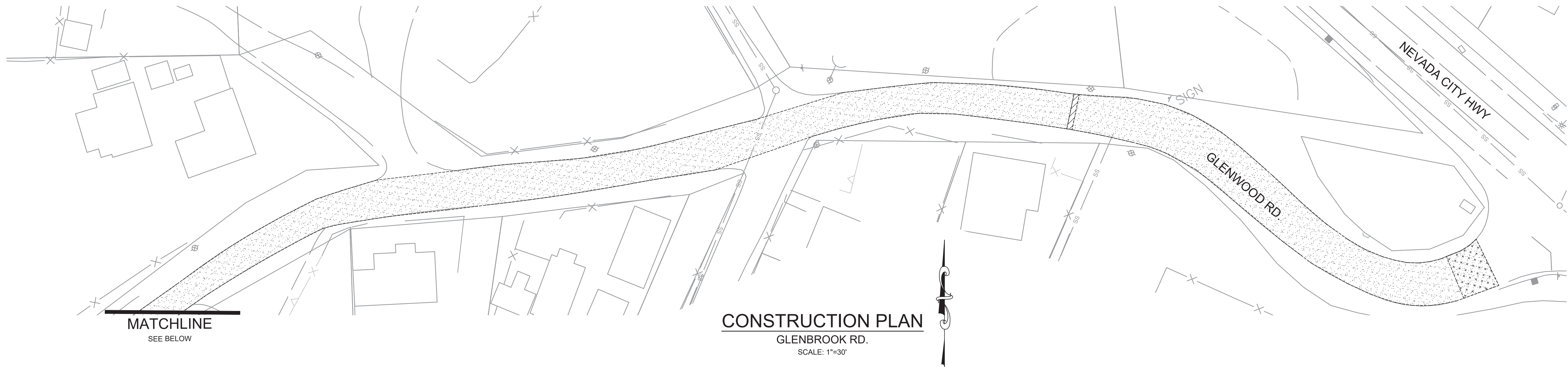
CITY OF GRASS VALLEY ENGINEERING DIVISION
**2019/20 MEASURE E STREET
REHABILITATION PROJECT**
CONSTRUCTION PLAN (W. OLYMPIA)



DRAWN BY: **BPJ** DATE: **MAY 2020**
CHECKED BY: **BPJ** DATE: **MAY 2020**

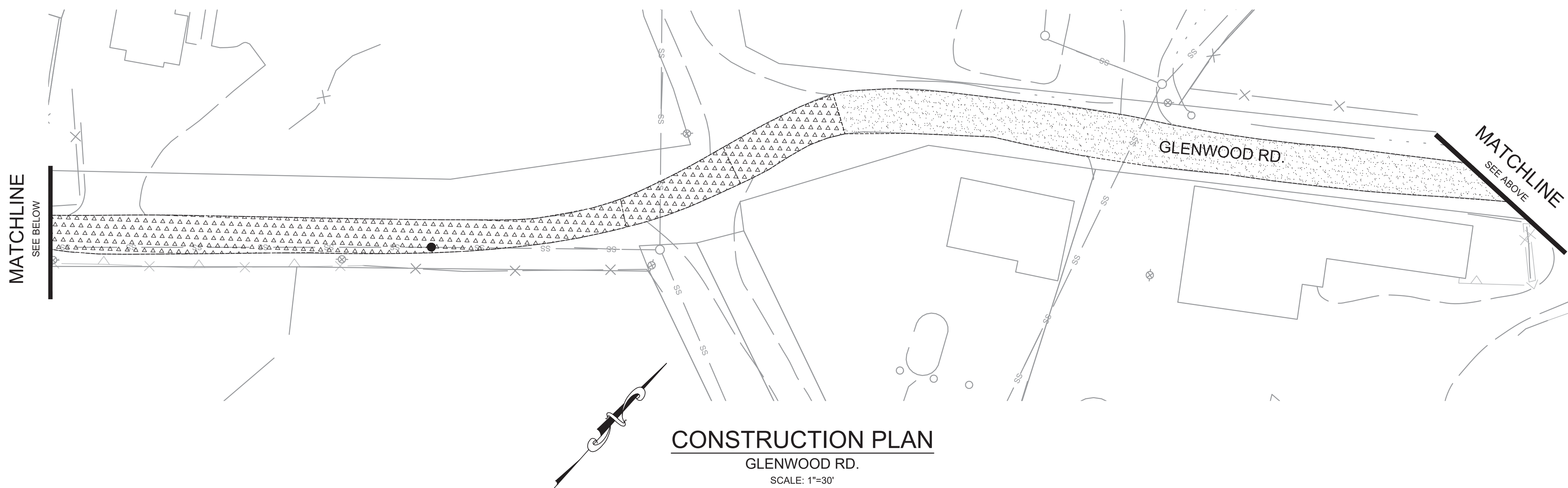
DRAWING NUMBER:
2164

SHEET NUMBER:
6 OF 8



MATCHLINE
SEE BELOW

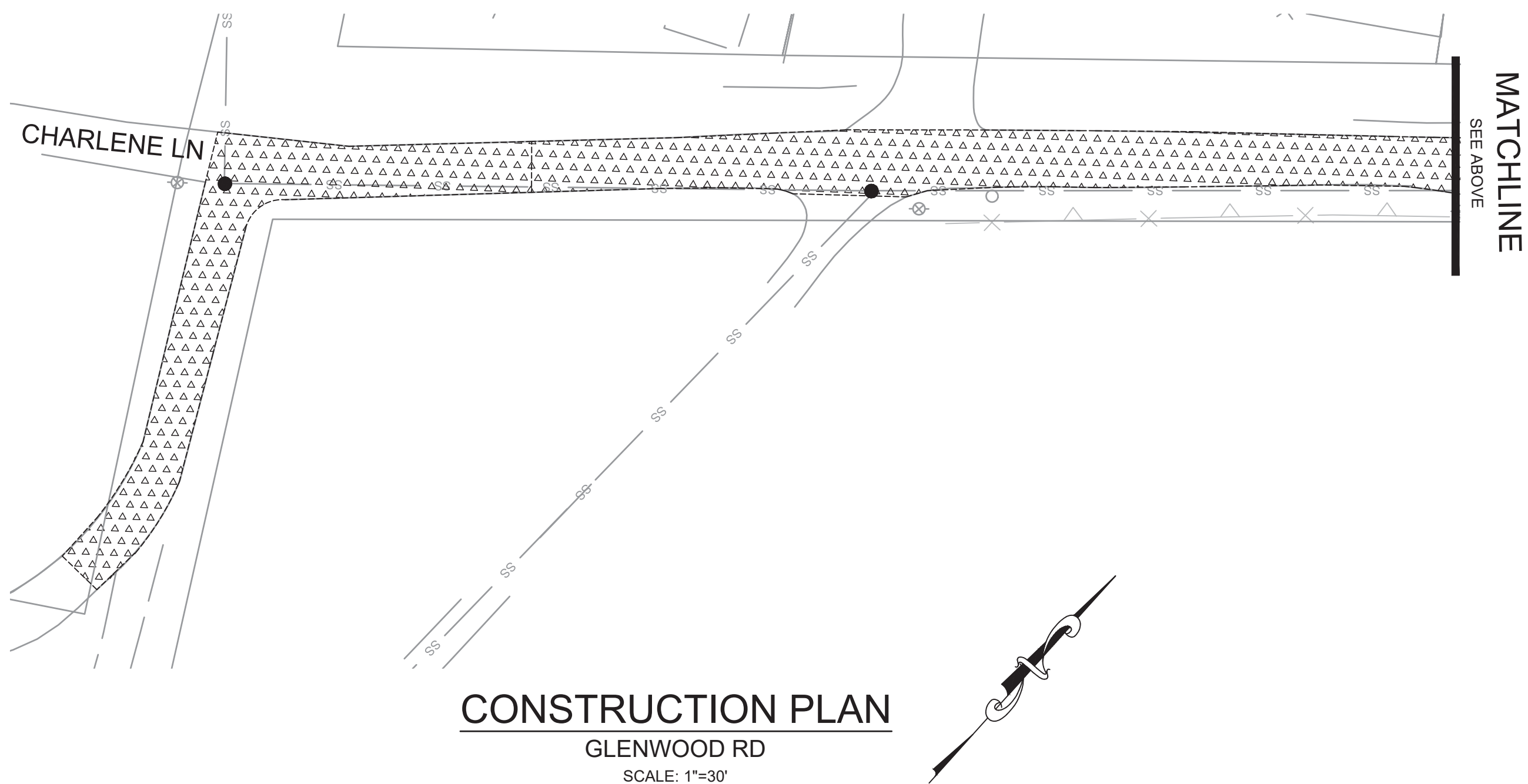
CONSTRUCTION PLAN
GLENBROOK RD.
SCALE: 1"=30'



MATCHLINE
SEE BELOW

MATCHLINE
SEE ABOVE

CONSTRUCTION PLAN
GLENWOOD RD.
SCALE: 1"=30'



MATCHLINE
SEE ABOVE

CONSTRUCTION PLAN
GLENWOOD RD
SCALE: 1"=30'

LEGEND

- 2" REMOVE AND REPLACE HMA PER DETAILS A, C, SHEET 8
- 3" REMOVE AND REPLACE HMA PER DETAILS A, C, SHEET 8
- 3" MILL AC AND COMPACT IN PLACE W/ 2.5" OVERLAY PER DETAIL F SHEET 7
- 2" TAPER GRIND PER DETAIL B, SHEET 8
- 2" HMA OVERLAY AREA
- REMOVE EXISTING VEGETATION AND RUBBLE, INSTALL AC GRINDING SHOULDER BACKING PER DETAIL
- UTILITY COVER TO BE ADJUSTED BY OTHERS (OR BY SEPARATE CONTRACT W/ NID)
- MANHOLE COVER TO BE ADJUSTED PER DETAIL F, SHEET 8
- MANHOLE FRAME & COVER TO BE REPLACED AND ADJUSTED PER DETAIL F, SHEET 8

NOTES

- THE CONTRACTOR SHALL ACCURATELY LOCATE AND RECORD THE LOCATIONS OF ALL UTILITY BOXES, CLEANOUTS AND MANHOLES.
- EXISTING PAVEMENT CRACKS GREATER THAN $\frac{3}{8}$ INCH WIDTH SHALL BE FILLED WITH HOT MIX RUBBERIZED CRACK FILLER PRIOR TO HMA OVERLAY. ANY OTHER VOIDS OR DEPRESSIONS GREATER THAN 1 INCH WIDTH SHALL BE FILLED WITH HMA PRIOR TO HMA OVERLAY.
- THE LIMITS OF HMA REMOVAL AND REPLACEMENT AND HMA OVERLAY SHOWN ARE APPROXIMATE. EXACT LOCATIONS TO BE MARKED IN THE FIELD AND APPROVED BY THE ENGINEER PRIOR TO GRINDING.
- NEW HMA PAVING SHALL CONFORM TO EXISTING DRIVEWAYS AND LIP OF GUTTER. PAVEMENT SHALL BE SLOPED TO ALLOW DRAINAGE TO FREELY FLOW FROM NEW PAVEMENT SURFACES TO EXISTING GUTTERS/ ROADWAY SHOULDERS
- THE CONTRACTOR SHALL COMPLETELY REMOVE EXISTING THERMOPLASTIC STRIPING AND MARKINGS PRIOR TO OVERLAY.
- UTILITY COVERS AND MANHOLES WITHIN THE HMA PAVING AREA SHALL BE ADJUSTED TO GRADE AS SHOWN OR OTHERWISE SHALL BE CONFORMED TO AS APPROVED BY THE ENGINEER AND THE OWNER.
- STRIPING AND MARKING PER CA MUTCD AND CALTRANS STANDARD PLANS.
- THE CONTRACTOR SHALL MARK OUT THE STRIPING LAYOUT AND OBTAIN THE ENGINEER'S ACCEPTANCE PRIOR TO STRIPING. CHANGES MAY OCCUR IN THE FIELD.

NOTE:
THE CITY OF GRASS VALLEY OR ITS OFFICERS OR AGENTS SHALL NOT BE RESPONSIBLE FOR THE ACCURACY OR COMPLETENESS OF ELECTRONIC COPIES OF THIS PLAN SHEET.

CITY OF GRASS VALLEY ENGINEERING DIVISION

2019/20 MEASURE E STREET
REHABILITATION PROJECT
CONSTRUCTION PLAN (GLENWOOD RD)



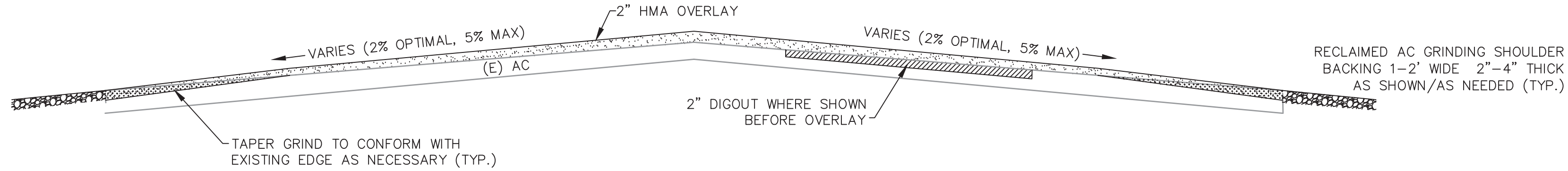
DRAWN BY: BPJ	DATE: MAY 2020
CHECKED BY: BPJ	DATE: MAY 2020
DRAWING NUMBER: 2164	
SHEET NUMBER: 7 OF 8	

REVISIONS

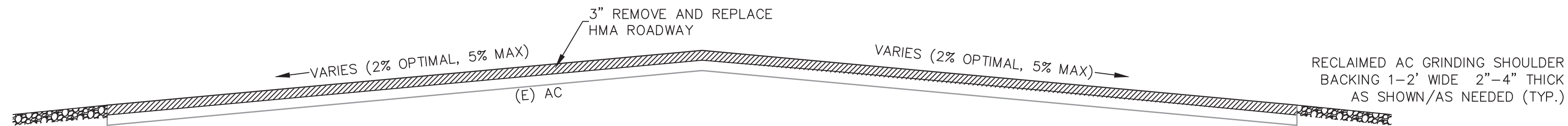
No.	Description	Engr Init	Date



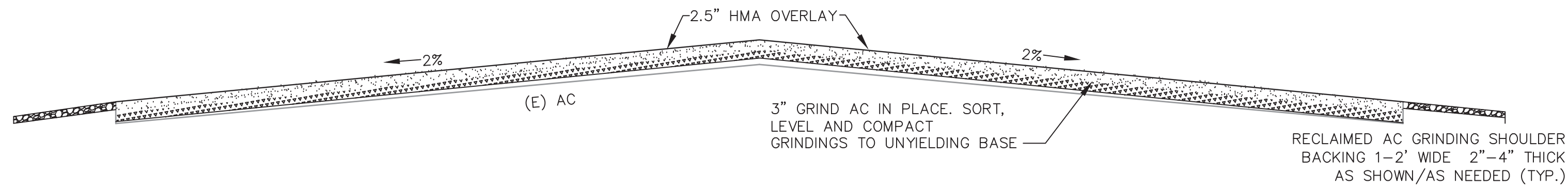
PROJECT NUMBER:
20-02



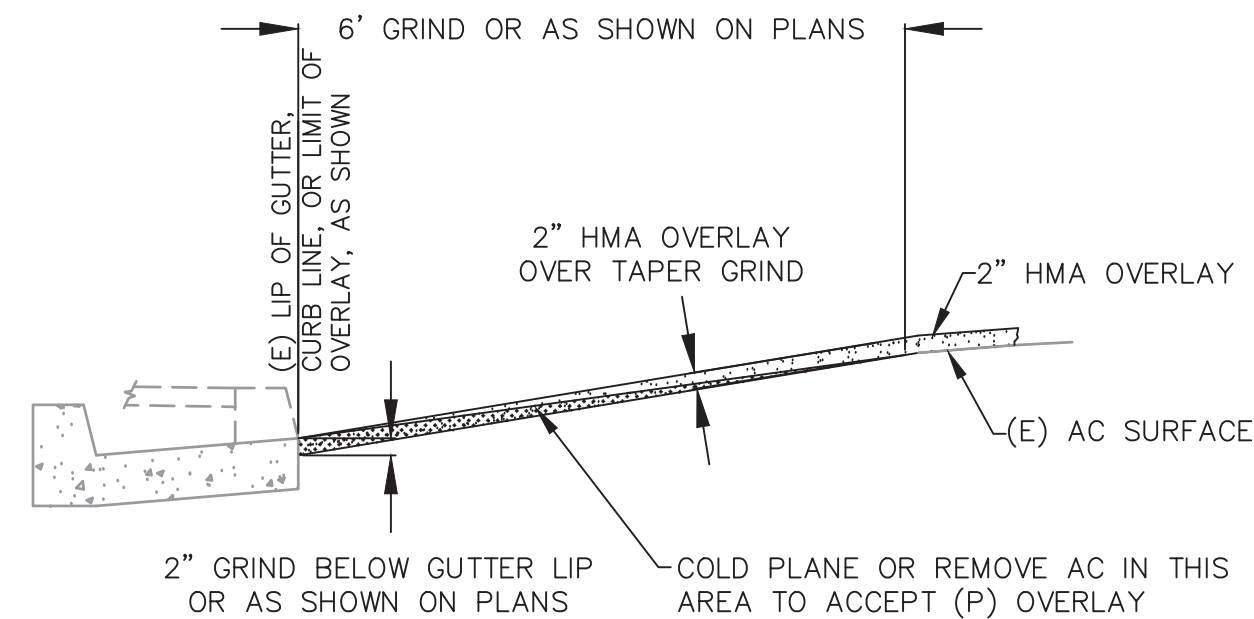
A
7
STREET CROSS SECTION (ROAD OVERLAY)
2" HMA OVERLAY W/ 2" R&R
NOT TO SCALE



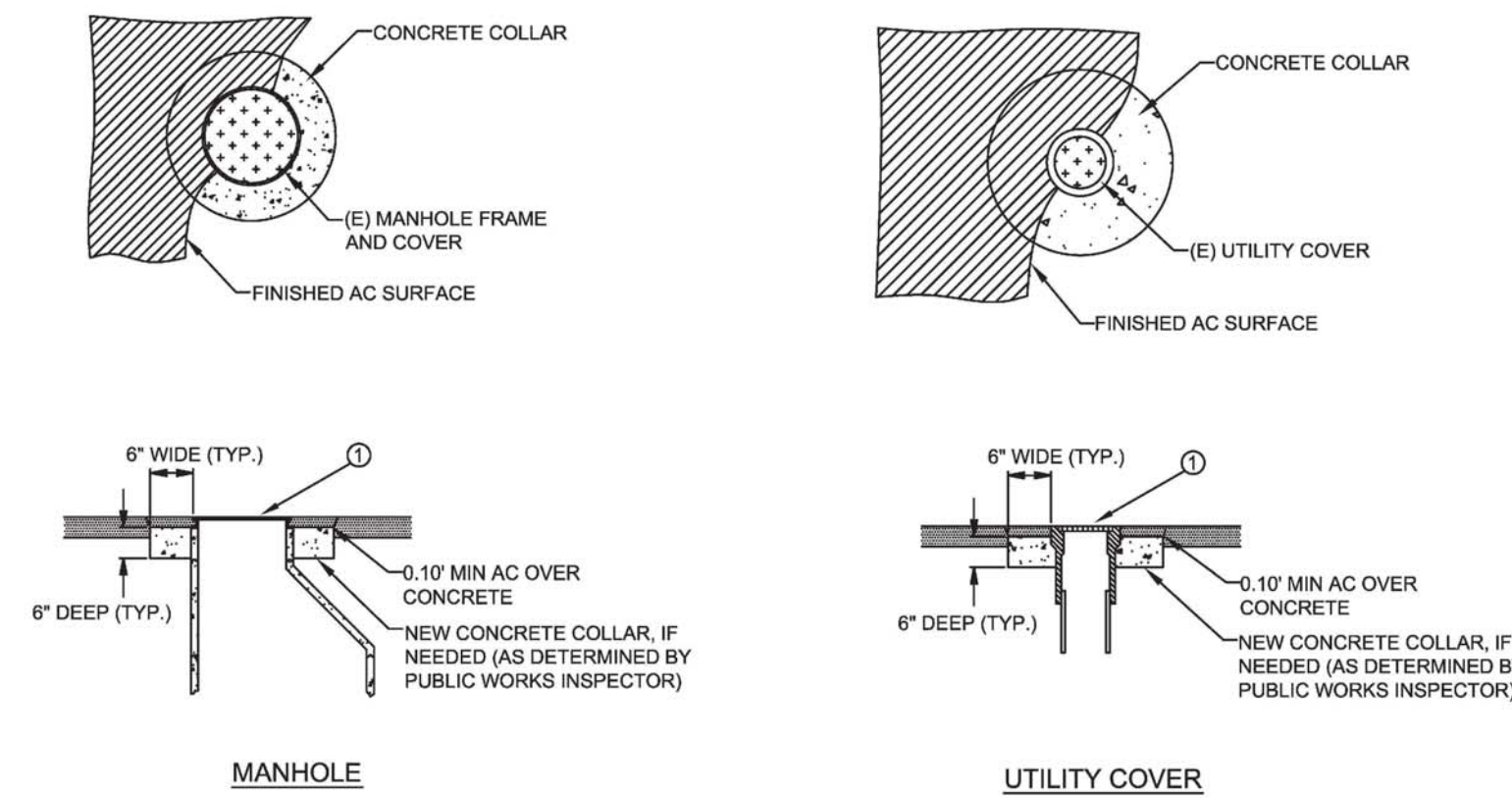
C
7
STREET CROSS SECTION (ROAD REPLACEMENT)
3" REMOVE AND REPLACE HMA
NOT TO SCALE



E
7
STREET CROSS SECTION (CIR W/ OVERLAY)
3" GRIND AND COMPACT W/ 2.5" HMA OVERLAY
NOT TO SCALE



B
7
2" TAPER GRIND
NOT TO SCALE



F
7
ADJUST UTILITY COVER/ MH TO GRADE
NOT TO SCALE

PUBLIC WORKS DEPARTMENT ENGINEERING DIVISION ADJUST UTILITY COVER/ MANHOLE TO GRADE			
APPROVED BY: <i>[Signature]</i> PUBLIC WORKS DIRECTOR / CITY ENGINEER			
SCALE: NONE	DRAWN BY: TMT	DATE: FEB 6, 2014	ST-28

CITY OF GRASS VALLEY ENGINEERING DIVISION

2019/20 MEASURE E STREET REHABILITATION PROJECT

DETAILS



DRAWN BY: **BPJ** DATE: **MAY 2020**
CHECKED BY: **BPJ** DATE: **MAY 2020**

DRAWING NUMBER:
2164

SHEET NUMBER:
8 OF 8

NOTE:
THE CITY OF GRASS VALLEY OR ITS OFFICERS OR AGENTS SHALL NOT BE RESPONSIBLE FOR THE ACCURACY OR COMPLETENESS OF ELECTRONIC COPIES OF THIS PLAN SHEET