
To:	Rick Kuyper, Chief – Sierra/Cascades Division, Endangered Species Program U.S. Fish and Wildlife Service 2800 Cottage Way Rm W-2605 Sacramento, CA 95825	From:	Emily C. Eppinger, Wildlife Biologist Stantec Consulting Services Inc. 101 Providence Mine Rd. Suite 202 Nevada City, CA 95959
File:	185704588	Date:	July 18, 2019

Reference: California Red-legged Frog (*Rana draytonii*) Habitat Site Assessment and Survey Results for the Hansen Brothers Enterprises La Barr Meadows Road Property, Nevada County, California.

INTRODUCTION

Hansen Brothers Enterprises (Hansen Bros.) has recently acquired an approximately 85-acre property located adjacent to La Barr Meadow Road to the southeast of their existing office and yard, in the City of Grass Valley in Nevada County, California (Attachment 1 Figure 1). Hansen Bros. is contemplating development options and therefore in a proactive manner has started to assess the environmental constraints associated with the land. The goal is to design any future development to avoid or minimize environmental impacts, including to species listed under the Federal Endangered Species Act (ESA) such as California red-legged frog (*Rana draytonii*).

Based on initial desktop reviews and reconnaissance-level surveys, the property lacks impoundments, with one exception. In the southern portion of the property there is an old irrigation pond (pond) formerly owned and operated by the Nevada Irrigation District (NID) (Attachment 2 Figure 2). The pond, approximately 0.2 acres in size, is no longer in use and upon initial review, could be considered potential habitat for the California red-legged frog (*Rana draytonii*), a federally threatened species. To be proactive, Hansen Bros. requested Stantec Consulting Services Inc. (Stantec) conduct a habitat site assessment to assess the potential for California red-legged frog (CRLF) presence. In addition to the habitat site assessment, Stantec also conducted a single daytime and a single nighttime survey for CRLF at the pond to further assess potential for occurrence. The habitat site assessment and surveys were conducted in accordance with the U.S. Fish and Wildlife Service's (USFWS) *Revised Guidance on Site Assessments and Field Surveys for the California Red-legged Frog* (USFWS 2005).

HABITAT SITE ASSESSMENT METHODS AND RESULTS

DESKTOP REVIEW

Desktop research and analysis of the potential suitable breeding habitat (ponds) included an approximate one-mile (1.6-kilometer) buffer surrounding the pond on the Hansen Bros. La Barr Meadows Road Property (Hansen Bros. property). The purpose of the desktop research was also to evaluate regional and local habitats and to identify the potential for CRLF to occur within and in close proximity to the pond that lies within the Hansen Bros. property. The following resources were used to identify the current known range, known occurrences of CRLF within Nevada, Placer, Yuba, and Sierra Counties, the closest Designated Critical Habitat (DCH) units, and potential suitable CRLF habitat within one mile of the pond.

July 18, 2019

Rick Kuyper, Chief – Sierra/Cascades Division, Endangered Species Program

Page 2 of 5

Reference: California Red-legged Frog (*Rana draytonii*) Habitat Site Assessment and Survey Results for the Hansen Brothers Enterprises La Barr Meadows Road Property, Nevada County, California.

- California Department of Fish and Wildlife (CDFW) Rarefind Version 5.2.14 (CDFW 2019a);
- CDFW BIOS Viewer Version 5.77.14 (CDFW 2019b);
- USFWS Critical Habitat Data (USFWS 2019a);
- USFWS National Wetland Inventory (NWI) Data (USFWS 2019b);
- U.S. Geological Survey (USGS) National Hydrology Dataset (NHD) (USGS 2019); and
- Aerial photographs.

The pond within the Hansen Bros. property is within the current range of CRLF (CDFW 2019b). There are no known localities within one mile of the pond or the Hansen Bros. property (CDFW 2019a). The closest DCH unit is NEV-1 located approximately 10 miles to the northeast, which also includes the closest known occurrence from 2003-2007, specially located within the North Bloomfield USGS 7.5-minute quadrangle (Quad). Other known occurrences include one observation documented in 2001-2003 located approximately 16 miles to the northwest within the Challenge USGS Quad and DCH Unit YUB-1; and three observations in the Michigan Bluff USGS Quad and DCH Unit PLA-1 located approximately 16 miles to the southeast of the Hansen Bros. property (CDFW 2019b).

Wetland features identified by the National Wetlands Inventory (NWI) within one mile of the pond are shown in Figure 1. Based on desktop research and analysis, evaluation of aerial photos, and ground-truthing where accessible, the wetland features present within a mile of the pond and the Hansen Bros. property likely possess similar habitat suitability characteristics to the pond located on the Hansen Bros. property. Formal habitat assessments for CRLF or suitable CRLF habitat were not conducted at these ponds due to access limitations (e.g., private property). Given the historical data and similarity among wetland features in the area, it is unlikely that CRLF inhabit the ponds within a mile of the pond on the Hansen Bros. property. Additionally, these ponds lack direct connectivity to the pond on the Hansen Bros. property, and the habitat within one mile of the pond is fragmented by urban areas, including industrial and housing complexes and highly trafficked two-lane roads such as La Barr Meadows Road and Highway 49.

FIELD SITE ASSESSMENT

Stantec biologists conducted two site visits to the Hansen Bros. property. A preliminary visit to the Hansen Bros. property was conducted on June 17, 2019, and a formal habitat site assessment for CRLF was conducted on June 27, 2019. The habitat within the approximate 85-acre Hansen Bros. property consists predominately of mixed ponderosa pine (*Pinus ponderosa*) and oak (*Quercus* sp.) forest, with a thick understory of manzanita (*Arctostaphylos* sp.), as well as other chaparral and some grassland species in disturbed areas. During the preliminary site visit, a few wetted features and drainages with associated species such as willow (*Salix* sp.) and Himalayan blackberry (*Rubus armeniacus*) were observed, generally on the western edge of the property (Attachment 3 Photos 1–4). Additionally, an abandoned irrigation pond was initially identified as possessing potential suitable habitat for CRLF.

During the second site visit on June 27, 2019, two qualified Stantec biologists conducted a habitat site assessment for the pond in accordance with the *Revised Guidance on Site Assessments and Field Surveys for the California Red-legged Frog* (USFWS 2005). Data collected during the field habitat site assessment was recorded on the California Red-legged Frog Habitat Site Assessment Data Sheet provided within the USFWS guidelines (Attachment 4). Prior to conducting the habitat site assessment at the pond, organic matter was removed from survey equipment and equipment was decontaminated, per USFWS guidelines.

July 18, 2019

Rick Kuyper, Chief – Sierra/Cascades Division, Endangered Species Program

Page 3 of 5

Reference: California Red-legged Frog (*Rana draytonii*) Habitat Site Assessment and Survey Results for the Hansen Brothers Enterprises La Barr Meadows Road Property, Nevada County, California.

The habitat site assessment included the pond and the habitat safely accessible by foot surrounding the pond (Figure 2).

The pond on the Hansen Bros. property is a perennial freshwater pond approximately 0.2 acres in size and the perimeter measures approximately 402 feet (122 meters) around. The aquatic habitat in the pond includes areas of open water, a few small patches of emergent vegetation (e.g., grasses, rushes), and overhanging riparian vegetation including willow and Himalayan blackberry, extremely thick in some areas (Photos 5–6). Visibility of the water extends approximately 18 inches below the surface, and the substrate on the bottom is predominantly silt with a few areas of large cobbles and small boulders. The depth of the pond was estimated to be a maximum depth of 8–10 feet. The water temperature was 72 degrees Fahrenheit (°F) (22 degrees Celsius [°C]). The pond has no outlet nor stream inlet; water entering the pond includes multiple subsurface seep flows from the hillside to the east/southeast (Photos 7–8) (Figure 2).

Upland habitat along the perimeter and banks of the pond and in adjacent areas includes species such as willow, coyote brush (*Baccharis pilularis*), black oak (*Quercus kelloggii*), ponderosa pine, perennial peavine (*Lathyrus latifolius*), and manzanita. The eastern side of the pond slopes up into a ponderosa pine forest with an understory of manzanita, while the western and southern banks of the pond generally consist of thick vine, forb, and willow species, and are difficult to access on foot (Photos 9–12). Soils are generally compacted red clay and rock.

During the habitat site assessment, no evidence of CRLF was observed. Other amphibian species observed included tadpoles of the Sierran treefrog (*Pseudacris sierra*) in the pond.

SURVEY METHODS AND RESULTS

In addition to the habitat site assessment, two qualified Stantec biologists also conducted a single daytime and a single nighttime survey for CRLF to further assess potential for occurrence at the pond on July 27, 2019 in accordance with the *Revised Guidance on Site Assessments and Field Surveys for the California Red-legged Frog* (USFWS 2005). Prior to conducting the surveys, equipment was decontaminated per USFWS guidelines. The survey area included the pond and the habitat safely accessible by foot within and surrounding the pond (Figure 2). Data collected during the field surveys were recorded on a California Red-legged Frog Survey Data Sheet provided within the USFWS guidelines (Attachment 5 and Attachment 6).

Daytime Survey

Upon arrival at the survey site and prior to the commencement of the survey, Stantec biologists quietly listened for audio calls and watched for visual observations of amphibians. Biologists then conducted a visual encounter survey (VES) of the pond and its banks along the perimeter of the pond where safely accessible. Biologists used binoculars to search for CRLF and evidence of other aquatic or potential predator species.

The daytime survey began at 18:30 and ended at 19:30. Weather conditions were warm and calm with high clouds and an air temperature of 69°F (20.5°C). The water temperature was 72°F (22°C). For additional weather data during the daytime survey, see Attachment 5. Amphibian species observed during the daytime survey included Sierran treefrog tadpoles in Gosner stages 26–43 (Gosner 1960) (Photos 13–15). Evidence of other aquatic/semi-aquatic species included the observation of aquatic snails, water striders, and the abandoned exoskeletons of dragonfly nymphs (Photo 16). One potential small mammal burrow was observed approximately 15 feet (4.6 meters) from the western edge of the pond. **No CRLF were observed during the daytime survey conducted on June 27, 2019.**

July 18, 2019

Rick Kuyper, Chief – Sierra/Cascades Division, Endangered Species Program

Page 4 of 5

Reference: California Red-legged Frog (*Rana draytonii*) Habitat Site Assessment and Survey Results for the Hansen Brothers Enterprises La Barr Meadows Road Property, Nevada County, California.

Nighttime Survey

Prior to the start of the survey, biologists quietly listened for the audio calls of amphibians. Biologists then conducted a VES of the pond and its banks along the perimeter of the pond, where safely accessible. Biologists used binoculars and headlamps to search and scan for the eyeshine of CRLF and other amphibian species.

The nighttime survey began at 21:35 and ended at 22:45. Weather conditions were overcast, warm, and calm with an air temperature of 62°F (16.7°C). The water temperature was 72°F (22°C). For additional weather data during the daytime survey, see Attachment 6. Amphibian species observed during the nighttime survey included Sierran treefrog and American bullfrog (*Rana catesbeiana*) (Photos 17–20). Sierran treefrog observations included larvae in Gosner stages 26–41, young-of-year, and breeding adults (Gosner 1960). One pair of adult Sierran treefrogs was observed in amplexus. One audio and one visual observation was made of an adult American bullfrog. Other aquatic species observations include aquatic snails, water striders, water boatmen, and other water beetles. **No CRLF were observed during the nighttime survey conducted on June 27, 2019.**

CONCLUSION

Based on the results of the habitat site assessment and surveys conducted on June 27, 2019, it is unlikely that CRLF are present in the old irrigation pond on the Hansen Brothers property. Specifically, there is a very low likelihood of CRLF in the area due to the distance to known occurrences, the presence of predators, the pond's perennial characteristics, and the surrounding habitat fragmentation and urban barriers to migration and dispersal.

Proposed Avoidance Measures

Should future development of the property include the pond removal or work in and around the pond, Hansen Bros. understands that in conjunction with the low likelihood of species presence, additional avoidance measures are necessary for the USFWS to concur there is a low likelihood for “take”. Hansen Bros. proposes the following:

1. A pre-construction clearance survey;
2. Contractor environmental awareness training;
3. CRLF monitoring during the initial ground disturbance concurrent with any state-required aquatic species rescue efforts;
4. A Hansen Bros. foreman with stop work authority to halt construction if a CRLF is observed in the area;
5. If a frog is found on site, an on-call biologist will be available for identification; and
6. In the unlikely case of a CRLF sighting, coordination with the USFWS shall ensue.

July 18, 2019


Rick Kuyper, Chief – Sierra/Cascades Division, Endangered Species Program

Page 5 of 5

Reference: California Red-legged Frog (*Rana draytonii*) Habitat Site Assessment and Survey Results for the Hansen Brothers Enterprises La Barr Meadows Road Property, Nevada County, California.

Please feel free to contact myself or Bernadette Bezy at bernadette.bezy@stantec.com or 530.470.0515 with any questions. Thank you.

Stantec Consulting Services Inc.



Emily C. Eppinger

Wildlife Biologist

Mobile: 916.606.0406

emily.eppinger@stantec.com

Attachment: 1) Figure 1 California Red-legged Frog Habitat Site Assessment and Survey Location
2) Figure 2 California Red-legged Frog Survey Area
3) Project Photo Record
4) California Red-legged Frog Habitat Site Assessment Data Sheet
5) California Red-legged Frog Survey Data Sheet – Daytime Survey
6) California Red-legged Frog Survey Data Sheet – Nighttime Survey

c. Jeff Hansen, Hansen Bros.
Ian Vogel, USFWS
Bernadette Bezy, Stantec
Elan Carnahan, Stantec

REFERENCES

CDFW. 2019a. California Department of Fish and Wildlife. Rarefind Version 5.2.14. <https://apps.wildlife.ca.gov/rarefind/view/RareFind.aspx>.

CDFW. 2019b. California Department of Fish and Wildlife. BIOS Viewer Version 5.77.14. <https://apps.wildlife.ca.gov/bios/?bookmark=327>.

Gosner, Kenneth L. 1960. A Simplified Table for Staging Anuran Embryos and Larvae with Notes on Identification. *Herpetologica* 16:183-190. https://www.jstor.org/stable/3890061?seq=8#metadata_info_tab_contents

USGS. 2019. U.S. Geological Survey. National Hydrology Dataset. https://www.usgs.gov/core-science-systems/ngp/national-hydrography/national-hydrography-dataset?qt-science_support_page_related_con=0#qt-science_support_page_related_con

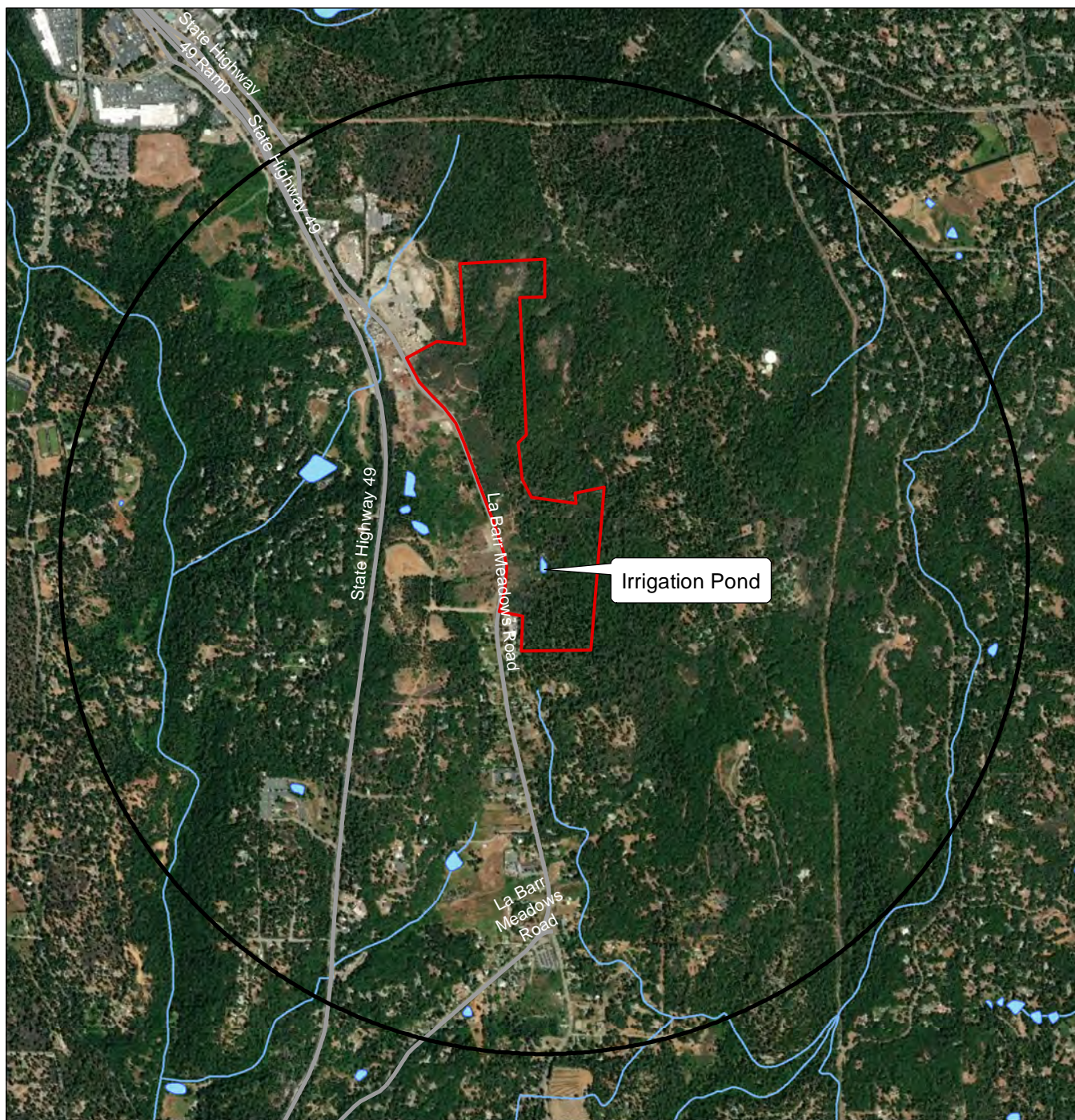
USFWS 2005. U.S. Fish and Wildlife Service. Revised Guidance on Site Assessments and Field Surveys for the California Red-legged Frog. http://www.fws.gov/sacramento/es/Survey-Protocols-Guidelines/Documents/crf_survey_guidance_aug2005.pdf.

USFWS. 2019a. U.S. Fish and Wildlife Service. Critical Habitat Data. Sacramento Fish and Wildlife Office, Online database. <https://www.fws.gov/sacramento/es/Critical-Habitat/Data>.

USFWS 2019b. U.S. Fish and Wildlife Service. National Wetlands Inventory Data. <http://www.fws.gov/wetlands/Data/Data-Download.html>.

Design with community in mind

ee v:\1857\active\185704588\report\habitat_assessment\mem_crf_hab_assess_la_barr_hansen_20190718.docx



Legend

- La Barr Meadows Road Property Boundary
- Irrigation Pond 1-mile Buffer
- Emergent Freshwater Pond (NWI & NHD)
- Hydrologic Feature (NHD)

Notes

1. Coordinate System: NAD 1983 StatePlane California II FIPS 0402 Feet
2. Data Sources include: Hansen Brothers Enterprises, U.S. Fish & Wildlife Service's National Wetlands Inventory (NWI), U.S. Geological Survey's National Hydrography Dataset (NHD)
3. Orthophotography: Esri, DigitalGlobe, GeoEye, Earthstar Geographics, CNES/Airbus DS, USDA, USGS, AeroGRID, IGN, HERE, Garmin, Intermap, increment P Corp., GEBCO, USGS, FAO, NPS, NRCAN, GeoBase, IGN, Kadaster NL, Ordnance Survey, Esri Japan, METI, Esri China (Hong Kong), swisstopo, © OpenStreetMap contributors, and the GIS User Community

Disclaimer: Stantec assumes no responsibility for data supplied in electronic format. The recipient accepts full responsibility for verifying the accuracy and completeness of the data. The recipient releases Stantec, its officers, employees, consultants and agents, from any and all claims arising in any way from the content or provision of the data.

Figure No.
1

DRAFT

Title:
California Red-legged Frog Habitat Site
Assessment and Survey Location

Client/Project

Hansen Brothers Enterprises
La Barr Meadows Road Property

Project Location

185704588

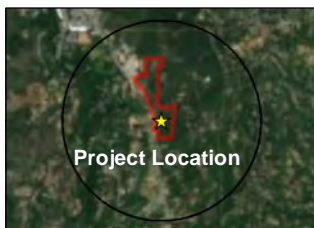
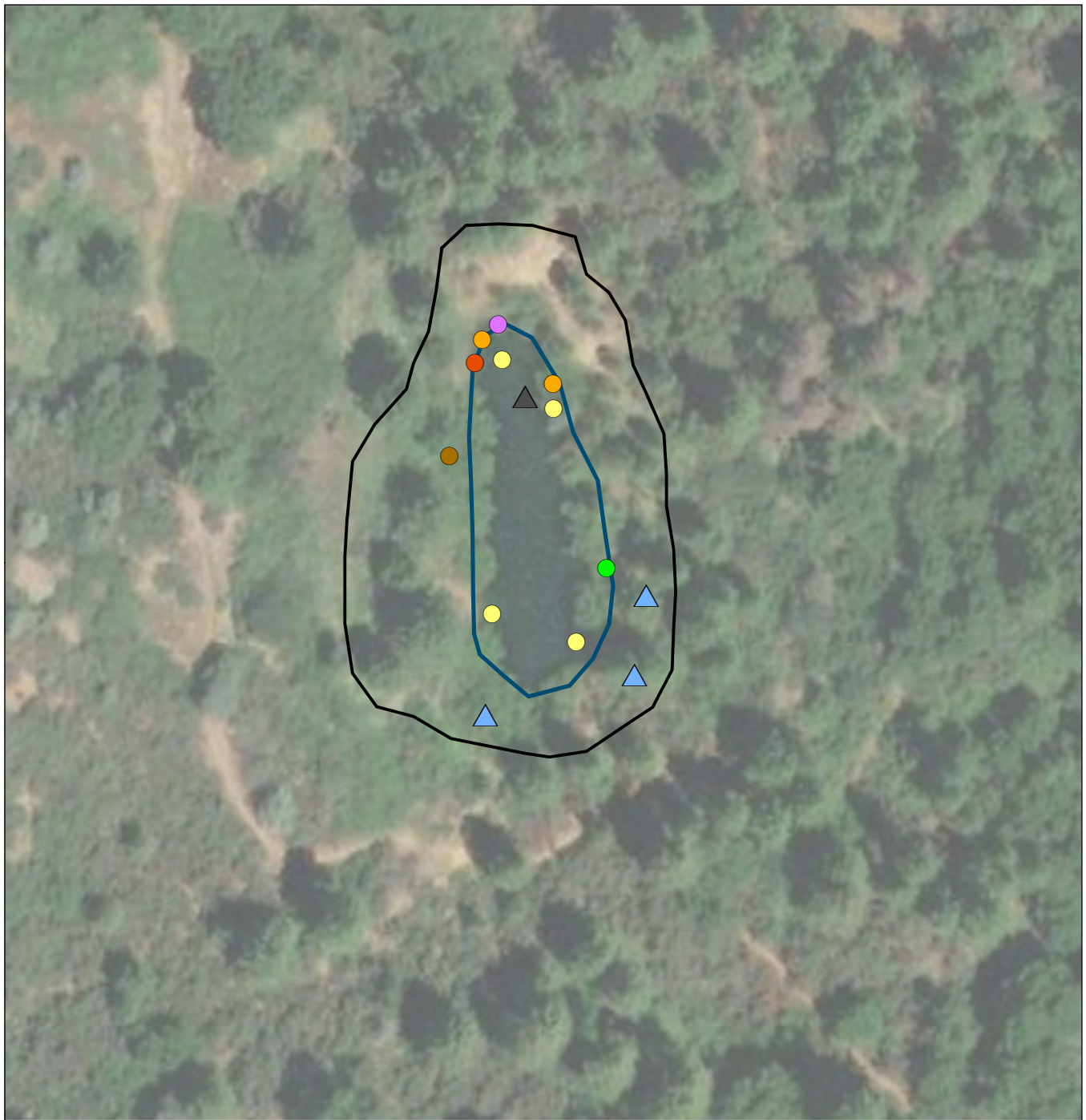
City of Grass Valley,
Nevada County, CA

0 500 1,000

Feet

1:20,249 (at original document size of 8.5x11)





Notes
 1. Coordinate System: NAD 1983 StatePlane California II FIPS 0402 Feet
 2. Data Sources Include: Hansen Brother's Enterprises, Stantec
 3. Orthophotography: Esri, DigitalGlobe, GeoEye, Earthstar Geographics, CNES/Airbus DS, USDA, USGS, AeroGRID, IGN, and the GIS User Community

Disclaimer: Stantec assumes no responsibility for data supplied in electronic format. The recipient accepts full responsibility for verifying the accuracy and completeness of the data. The recipient releases Stantec, its officers, employees, consultants and agents, from any and all claims arising in any way from the content or provision of the data.

Legend

- Irrigation Pond
- Approximate Survey Area

Observations

- Seep inflow
- Rocky substrate
- Potential small mammal burrow
- American bullfrog
- Sierran treefrog tadpoles
- Sierran treefrog young of year
- Sierran treefrog adult
- Sierran treefrog amplexus

Figure No.
2

DRAFT

Title:
**California Red-legged Frog
Survey Area**

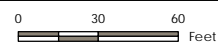
Client/Project

Hansen Brothers Enterprises
La Barr Meadows Road Property

Project Location

185704588

City of Grass Valley,
Nevada County, CA



1:863 (at original document size of 8.5x11)





Photo 1. Northern region of the Hansen Bros. property looking to the southwest. 6/17/19



Photo 2. Northwestern edge of the Hansen Bros. property along La Barr Meadows Road looking to the north. 6/17/19



Photo 3. Just west of the pond on the Hansen Bros. property looking to the south. 6/27/19



Photo 4. Just west of the pond on the Hansen Bros. property looking down on La Barr Meadows Road. 6/27/19

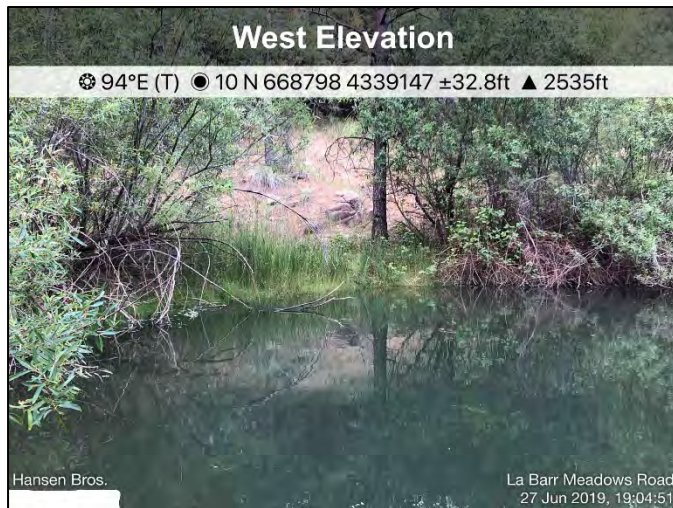


Photo 5. Northeast corner of the pond on the Hansen Bros. property. 6/27/19



Photo 6. South and west banks of the pond. 6/27/19



Photo 7. East bank of the pond: subsurface seeps from the east bank flow into the pond. 6/27/19



Photo 8. Subsurface seep flowing into the pond from the south bank. 6/27/19



Photo 9. West bank of the pond. 6/27/19



Photo 10. East bank of the pond. 6/27/19



Photo 11. West (foreground) and east banks of the pond. 6/27/19



Photo 12. South and west bank of the pond. 6/27/19

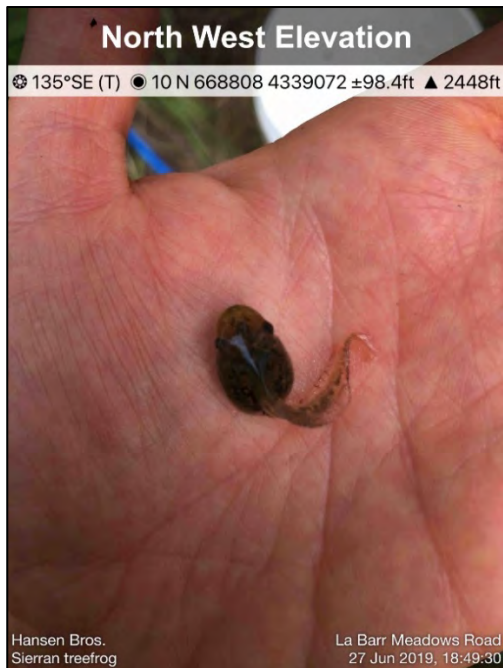


Photo 13. Sierran treefrog (*Pseudacris sierra*) larvae. 6/27/19

Photo 14. Sierran treefrog larvae. 6/27/19



Photo 15. Sierran treefrog larvae. 6/27/19

Photo 16. Dragonfly nymph exoskeleton. 6/27/19

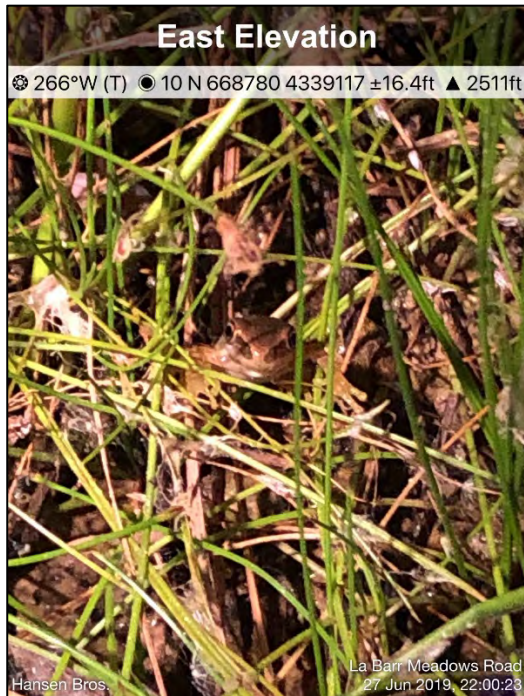


Photo 17. Adult Sierran treefrog. 6/27/19

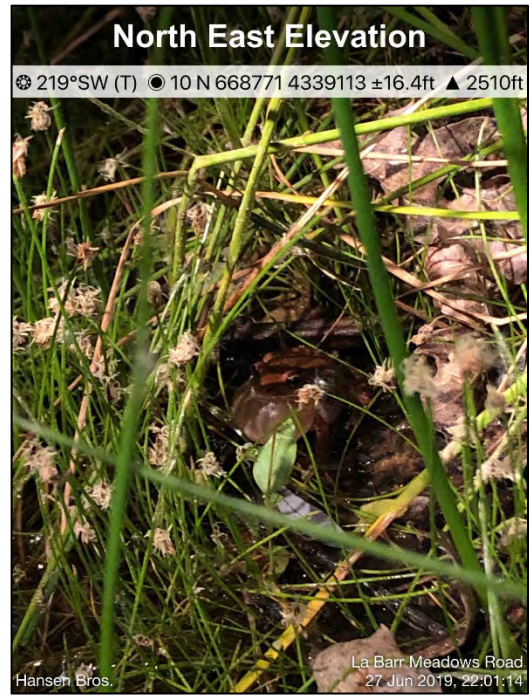


Photo 18. Vocalizing adult Sierran treefrog. 6/27/19

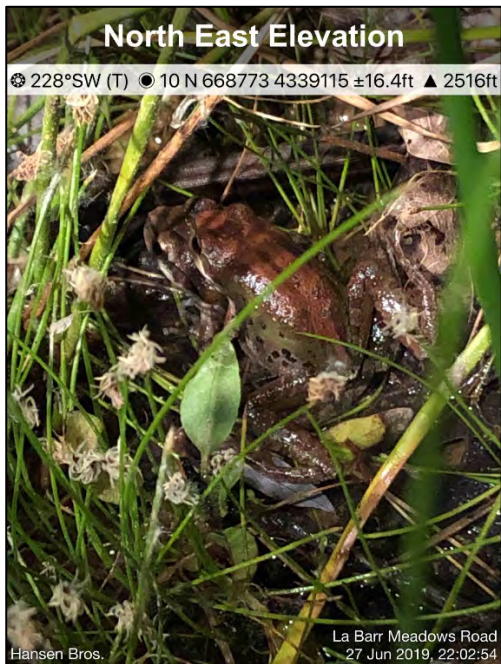


Photo 19. Amplexing pair of Sierran treefrog. 6/27/19



Photo 20. Adult American bullfrog (*Rana catesbeiana*). 6/27/19

Appendix D.
California Red-legged Frog Habitat Site Assessment Data Sheet

Site Assessment reviewed by _____
(FWS Field Office) (date) (biologist)

Date of Site Assessment: 6/27/2019
(mm/dd/yyyy)

Site Assessment Biologists: Epangio Emily Camahan Elan
(Last name) (first name) (Last name) (first name)

Site Location: Nevada, La Barr Meadows Rd, 10S 668786 mE 4339101 mN
(County, General location name, UTM Coordinates or Lat./Long. or T-R-S).

****ATTACH A MAP** (include habitat types, important features, and species locations)**

Proposed project name: La Barr Meadows Rd. Development Project
Brief description of proposed action:
Hansen Bros. currently in planning stages of Project development - Project Action, Action area (footprint) yet to be defined

- 1) Is this site within the current or historic range of the CRF (circle one)? YES NO
- 2) Are there known records of CRF within 1.6 km (1 mi) of the site (circle one)? YES NO
If yes, attach a list of all known CRF records with a map showing all locations.

GENERAL AQUATIC HABITAT CHARACTERIZATION
(if multiple ponds or streams are within the proposed action area, fill out one data sheet for each)

POND: Size: ~ 0.20 acres

Maximum depth: Estimated 8-10'

Vegetation: emergent, overhanging, dominant species: Surrounding habitat
- Emergent: grass few rush - no typha Coyote brush
- Overhanging: willow Ponderosa, few black oak
- Dominant: Himalayan Blackberry, peas Manzanita - clay rocky
Substrate: silt, rock - large cobble small boulder - NW corner
- felt fairly solid when walking in pond near perimeter

Perennial or Ephemeral (circle one). If ephemeral, date it goes dry: Perennial
- old irrigation pond, consistently fed by seeps/springs on hill side (east & south)

Appendix D.
California Red-legged Frog Habitat Site Assessment Data Sheet

STREAM:

Bank full width: _____

Depth at bank full: _____

Stream gradient: _____

Are there pools (circle one)? YES NO

If yes,

Size of stream pools: _____

Maximum depth of stream pools: _____

Characterize non-pool habitat: run, riffle, glide, other: _____

Vegetation: emergent, overhanging, dominant species: _____

Substrate: _____

Bank description: _____

Perennial or Ephemeral (circle one). If ephemeral, date it goes dry: _____

Other aquatic habitat characteristics, species observations, drawings, or comments:

- snails present
- dragonfly larva/pupa cases? - exoskeletons left on vegetation
- grass - emergent
 ↓
 fine bladed
- overhanging willow - branches - make shoreline difficult to swim in area
- Sierran treefrog tadpoles present
- No predatory species observed
- deer tracks observed around/on banks

Necessary Attachments:

1. All field notes and other supporting documents
2. Site photographs
3. Maps with important habitat features and species location

Birds observed:

NOFL	MODO	STJA	HETH
ANHU	LEGO	DEJU	SPTD
BNSH	CAQU	AMRO	WREN

page 1 of 2
Sunset 20:35

Appendix E.
California Red-legged Frog Survey Data Sheet

Survey results reviewed by _____
(FWS Field Office) (date) (biologist)

Date of Survey: 06/27/2019 Survey Biologist: Eppinger Emily
(mm/dd/yyyy) (Last name) (first name)

Survey Biologist: Camahan Elan
(Last name) (first name)

Site Location: Nevada, La Bar Meadows Rd., 10 S 668786 mE 4339101 mN
(County, General location name, UTM Coordinates or Lat./Long. or T-R-S).

****ATTACH A MAP** (include habitat types, important features, and species locations)**

Proposed project name: La Bar Meadows Rd. Development Project

Brief description of proposed action:

Hansen Bros. currently currently in planning stages of
Project development - Project Action, Action Area
(footprint) yet to be defined.

Type of Survey (circle one) DAY NIGHT

BREEDING NON-BREEDING

Survey number (circle one): 1 2 3 4 5 6 7 8

Begin Time: 18:30

End Time: 19:30

Cloud cover: 75%

Precipitation: 0

Air Temperature: 69° (20.5°C)

Water Temperature: 22°C (72°F)

Wind Speed: W 4 mph

Visibility Conditions: ~18" (water)

Moon phase: Waning crescent

Humidity: 30%

Description of weather conditions: Calm, warm, clear

Brand name and model of light used to conduct surveys: N/A

Were binoculars used for the surveys (circle one)? YES NO

Brand, model, and power of binoculars: Leupold 10x30s

Appendix E.

California Red-legged Frog Survey Data Sheet

6/27/19

Daytime survey

AMPHIBIAN OBSERVATIONS

Species	# of indiv.	Observed (O) Heard (H)	Life Stages	Size Class	Certainty of Identification
Sierran treefrog	~75	Observed	tadpole (larval)	varied	100%
		Gosner stages ranged from 26-41			

Describe potential threats to California red-legged frogs observed, including non-native and native predators such as fish, bullfrogs, and raccoons: None observed

Other notes, observations, comments, etc.

- 1 burrow - potential small mammal approximately 15' (5m) from NW bank
- soil is clay / rocky surrounds pond
- vegetation / habitat → east side ponderosa manzanita forest
- thick surrounding pond in immediate vicinity (west side)
- Pond substrate - silt
- Visibility ~ 18"
- snails
- dragon flies - nymph exoskeletons
- water striders

Necessary Attachments:

- All field notes and other supporting documents
- Site photographs
- Maps with important habitat features and species locations

BIRDS

- MOFL
- ANHU
- BWSH
- MOXD
- LEBO
- CAQU
- STJA
- DEJU
- AMPO
- HETH
- SPTD
- WRBN
- BRCK
- HAWD

Pg. 1 of 2

Appendix E.
California Red-legged Frog Survey Data Sheet

Sunset 20:35

Survey results reviewed by _____
 (FWS Field Office) (date) (biologist)

Date of Survey: 6/27/19
 (mm/dd/yyyy)

Survey Biologist: Eppinger Emily
 (Last name) (first name)

Survey Biologist: Cathahan Elan
 (Last name) (first name)

Site Location: Nevada LaBar Meadows Rd, 10 S 668706 mE 4339101 mN
 (County, General location name, UTM Coordinates or Lat./Long. or T-R-S).

****ATTACH A MAP** (include habitat types, important features, and species locations)**

Proposed project name: La Bar Meadows Rd. Development Project
 Brief description of proposed action:

Hansen Bros. currently in the planning stages of
 Project development - Project Action, Action Area (footprint)
 yet to be defined.

Type of Survey (circle one): DAY NIGHT

BREEDING NON-BREEDING

Survey number (circle one): 1 2 3 4 5 6 7 8

Begin Time: 21:35

End Time: 22:45

Cloud cover: 100%

Precipitation: none

Air Temperature: 62°F (16.7°C)

Water Temperature: 22°C (72°F)

Wind Speed: Calm

Visibility Conditions: ~12-18" in water

Moon phase: Waning crescent

Humidity: 43%

Description of weather conditions: Calm, warm, cloudy

Brand name and model of light used to conduct surveys: Pelican Headsup lite #2640 (2)

Were binoculars used for the surveys (circle one)? YES NO
 Brand, model, and power of binoculars: Leupold 10x30s

pg 2 of 2

Appendix E.
California Red-legged Frog Survey Data Sheet

AMPHIBIAN OBSERVATIONS

Species	(Approximate) # of indiv.	Observed (O) Heard (H)	Life Stages	Size Class	Certainty of Identification
Stewart treefrog	75	O	Larval Gosner	26-41	100%
J	3	O	Y04 Gosner	46	100%
	8	A	Adult	46	100%
J	3	O	Adult	46	100%
American bullfrog	1	A	Adult	46	100%
	1	O	Adult	46	100%

Describe potential threats to California red-legged frogs observed, including non-native and native predators such as fish, bullfrogs, and raccoons: Aquatic insects - eggs?

1 extremely large American Bullfrog

Other notes, observations, comments, etc.

- 1 pair treefrog in Amplexus
- 1 Audio & 1 visual of Adult Bullfrog - possible it was the same individual although on the opposite side of the pond
- no evidence of Breeds Arbullfrog

Other aquatics

- snails

- water skimmers

- water boatman

- water beetles (~3 species)

Birds

BATON

Necessary Attachments:

4. All field notes and other supporting documents
5. Site photographs
6. Maps with important habitat features and species locations