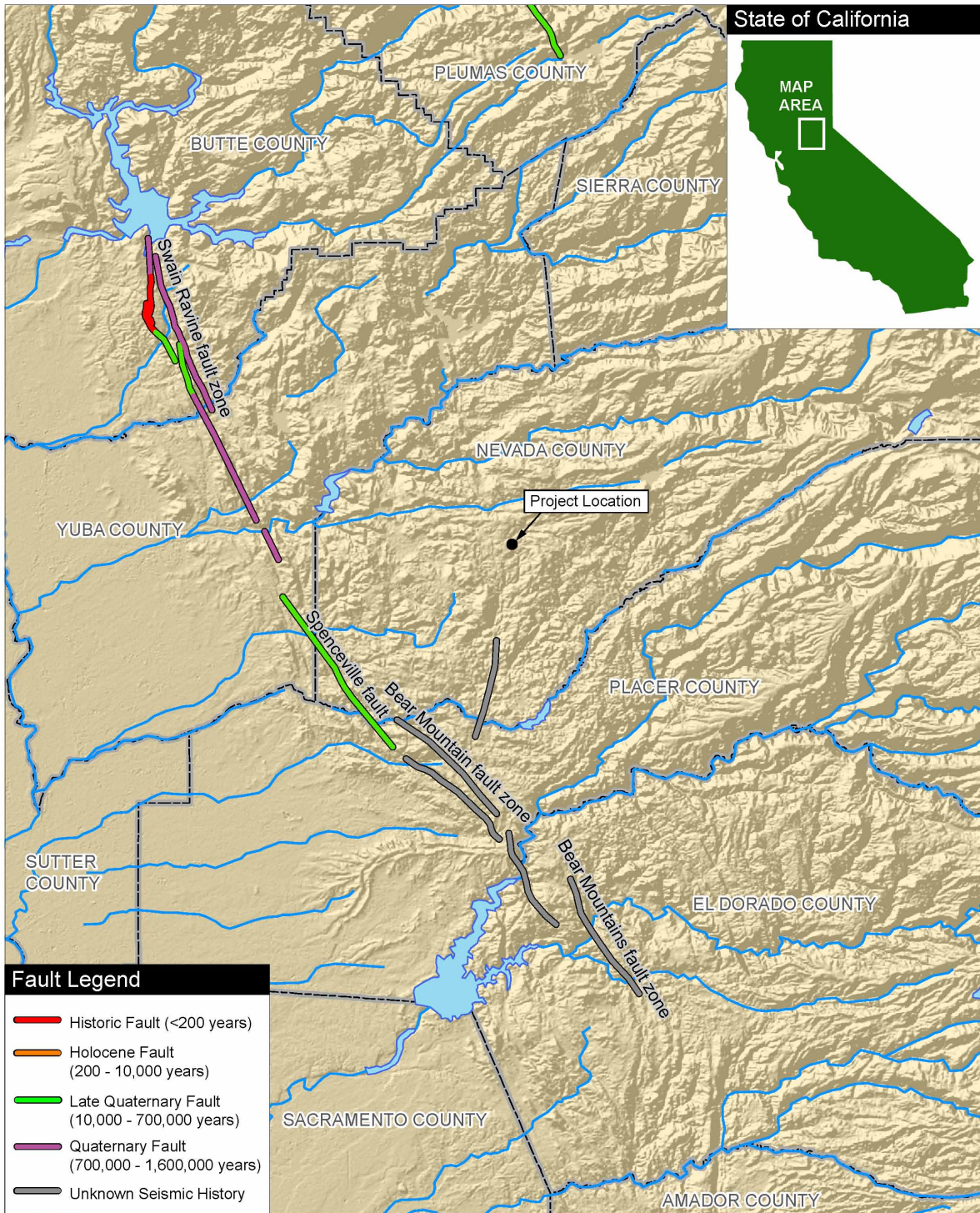


**Figure 6: Regional Fault Map**



Fault Legend	
	Historic Fault (<200 years)
	Holocene Fault (200 - 10,000 years)
	Late Quaternary Fault (10,000 - 700,000 years)
	Quaternary Fault (700,000 - 1,600,000 years)
	Unknown Seismic History

SOURCE: Bryant 2005, ESRI 2006, and MHA Environmental Consulting 2007

**LEGEND**

	River		Project Location
	Water		County Boundary

0 10 20 30 Miles

