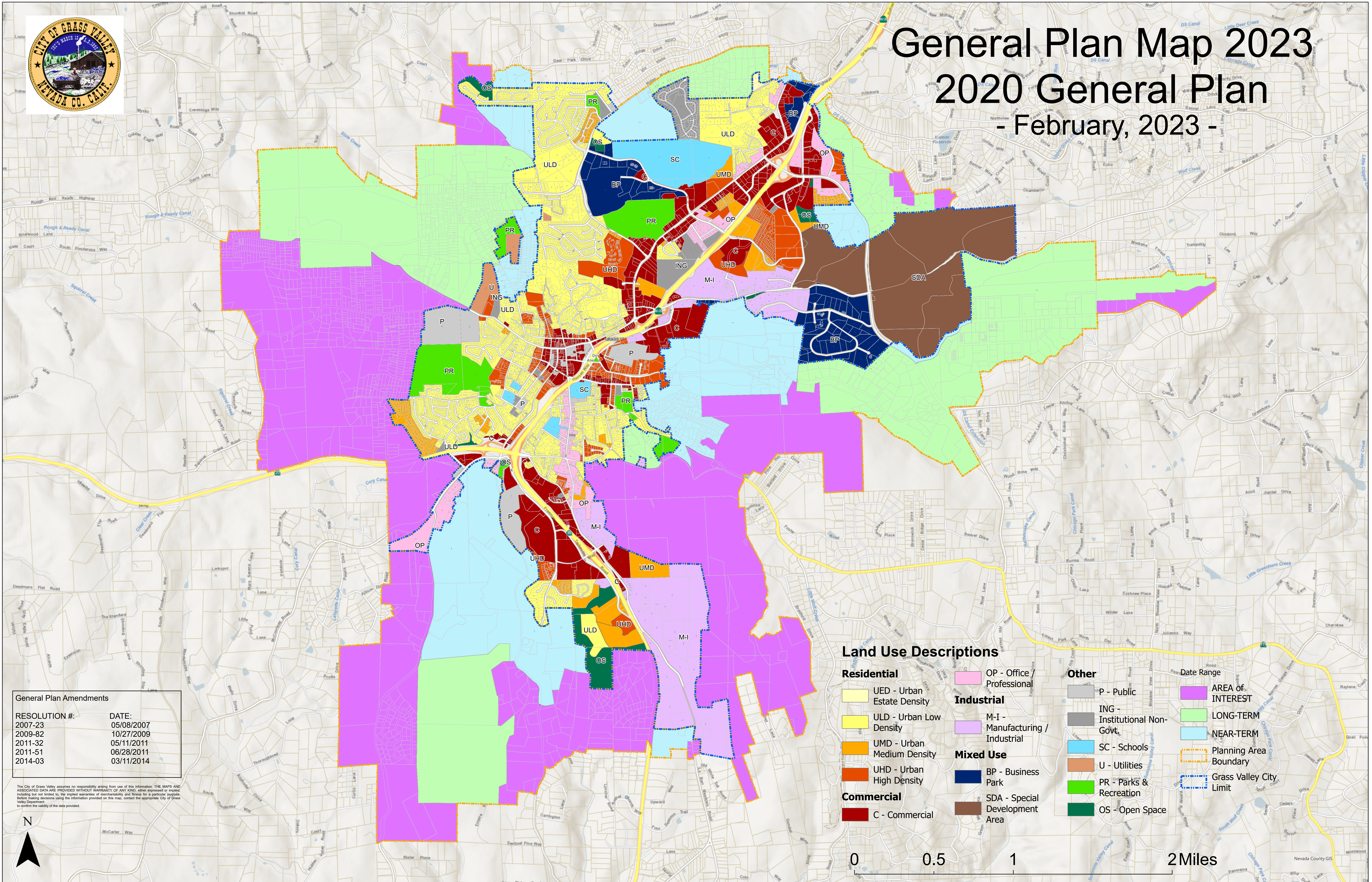




# General Plan Map 2023

## 2020 General Plan

- February, 2023 -



**General Plan Amendments**

RESOLUTION #:	DATE:
2007-23	05/08/2007
2009-82	10/27/2009
2011-32	05/11/2011
2011-51	06/28/2011
2014-03	03/11/2014

The City of Grass Valley assumes no responsibility arising from use of this information. THE MAPS AND ASSOCIATED DATA ARE PROVIDED WITHOUT WARRANTY OF ANY KIND, either expressed or implied, including but not limited to, the implied warranties of merchantability and fitness for a particular purpose. Before making decisions using the information provided on this map, contact the appropriate City of Grass Valley Department to confirm the validity of the data provided.



### Land Use Descriptions

- |                            |                                  |                               |
|----------------------------|----------------------------------|-------------------------------|
| <b>Residential</b>         | OP - Office / Professional       | <b>Other</b>                  |
| UED - Urban Estate Density | <b>Industrial</b>                | P - Public                    |
| ULD - Urban Low Density    | M-I - Manufacturing / Industrial | ING - Institutional Non-Govt. |
| UMD - Urban Medium Density | <b>Mixed Use</b>                 | SC - Schools                  |
| UHD - Urban High Density   | BP - Business Park               | U - Utilities                 |
| <b>Commercial</b>          | SDA - Special Development Area   | PR - Parks & Recreation       |
| C - Commercial             |                                  | OS - Open Space               |
- 
- |  |                         |
|--|-------------------------|
|  | AREA of INTEREST        |
|  | LONG-TERM               |
|  | NEAR-TERM               |
|  | Planning Area Boundary  |
|  | Grass Valley City Limit |

